



March 2022

Puget Sound Garden Railroading

Official Newsletter of the Puget Sound Garden Railway Society



The clinics begin with Jerry Madsen at the podium.
Photo by Bill Thurston.

INSIDE THIS ISSUE

- A report on the 2022 Clinics on pages 2-3.
- Programming a sound board on pages 4- 6.
- A chance to run trains at the Foss Maritime Museum on pages 6-7.
- An editorial on hosted meetings on page 7.
- A club member passing on page 7.
- A report from our Membership Chair on page 8.
- "So What Is It?" on page 8.
- Club events schedule on pages 9-10.
- Other events of possible interest on page 11.
- Local sources of G gauge stuff on page 12.
- Contact info on page 12.

On the Right Track

By Chuck Carlson, President.

At the Train Show I thought I'd made the deal of century getting a Southern Pacific USA Trains NW-2 engine for \$220.00. The train looked in new condition and the wheels showed no signs of wear. Ok, I get home and I notice it has KaDee large knuckle couplers on it; had to change to Aristocraft couplers. Since I'm all battery operation, my next step was to isolate the engine from track electrical pickup; took the engine blocks out and opened up the bottom to remove the pickup shoes. The block was full of red dust and the motor was covered on the top side (had to take the top off also). Well I got that cleaned up, greased the gears and oiled the shaft. Now I need to remove the screws to take the engine housing apart. The inside of the train was also full of red dust. Evidently this train had been run in Phoenix for a bit. Anyway, it's clean and ready to install battery, battery conversion module and receiver. Another issue was that this had the old wiring of USA and not the plug n play board of their newer trains— not the deal I thought.

I attended two Liar's Club Breakfasts this month; first was the Southend at Knapp's restaurant in Tacoma on the 2nd and the Westside Club at the Pancake house in Bremerton on the 10th. The turnout at both was thin but enjoyed the conversations.

This month's gathering was our Annual Clinic on the 19th, held at Messiah Lutheran Church in Auburn, Wa. I want to thank Jerry Madsen for organizing and arranging the presenters. Members started to arrive at 11:00 for swapping

trains and stories. We started the event with a Show and Tell from Norm Baulinger, Mark Howe, JT and Chris Johnson. Chris presented an unusual G Scale Trolley that was made by a manufacturing facility in Kent, Wa.

Each presenter had valuable projects and information. I was interested in Norm Baullinger's presentation considering I've been looking at an Anycubic Stereolithographic resin printer. Norm described how he used TinkerCad to design a gear for one of his steam engines. He then downloaded the Cad drawing to the 3D printer program and finally built the gear. Nowadays this may be the only way to get replacement parts for some of our older locomotives. Also, Bob Stevenson's explanation of electrical quirk's associated with back-and-forth trolleys may have solved my battery powered trolley. For some reason, the polarity on some motors needs to be reversed to operate back and forth. Hope it works.

Again, the Annual Meeting will be held by Zoom on the 26th of March. Sign in code and information will be emailed out the closer we get to the 26th. Please forward any agenda items to me prior to the meeting.



2022 Clinics

Article by Jerry Madsen, Clinics Coordinator

Photos by Bill Thurston

We had a successful day of knowledge sharing at our 2022 "How to" clinics on February 19th at the Messiah Lutheran church in Auburn. It was nice to be back at our old venue even though we were not allowed food or drink while there. A special thanks to Alan Melrose for arranging use of the church and being our official AV guy. I think there were around 30 people in attendance. I started off forgetting my club badge (along with several others) but most of us knew each other pretty well so that wasn't so bad. I also forgot all the copies of the day's schedule that I had printed but I did have a version of it on the thumb drive I gave to Alan, so he was able to show it on the screen. Before the presentations started there were some items for sale on the back table along with some freebies which included a whole box of tote bags from The Old Cannery furniture warehouse filled with goodies provided by JT Gehrke.

I started us off introducing the schedule of presentations and asked if there were any new members. We had 3 present, Dick and Wayne Meyer, and Patrick Hines. Welcome to the club fellas. We had a quick show and tell with Mark Howe showing his father-in-law's lantern that he added LED lights to make it glow a bright flickering red. Norm Baullinger showed us some of the signs he made for his railroad using his 3D printer, and JT Gehrke showed how his trains at the Old Cannery literally run the wheels off his locomotives. I have never seen a wheel set so worn that the flange was completely gone. Chris Johnson also showed off his train in a bottle and a unique trolley that was made by a toy company here in Kent.

The first presentation was from Norm Baullinger who showed us how to make objects in a free computer application called TinkerCAD for 3D printing. Norm made designing a replacement gear for his locomotive look easy. I think several of us including myself are planning to download that application and give it a try.

Next up was back-to-back presentations by Bob Stevenson and JT who taught us about locomotive maintenance and back and forth trolley operations. Both subjects received a lot of interest and questions from the crowd.

After a short break Alex Osenbach showed us how to load and unload the large trailer and set up the electric modules for shows. He also talked about some of the rules and courtesies for running trains on the layout.

Mark Howe showed us how to make boxes for carrying your trains around. He also has a really good video on YouTube on this subject.

I was the last presenter and showed how I made a locomotive test stand that you can set up to run your locomotives on before or after maintenance. You can even drive them right on to it. Sorry the video did not work for Mark's presentation or mine so next time I think I will bring my own projector for displaying video.

I wrapped things up with some closing comments about upcoming events at the Foss Maritime Museum and the June meeting at the Old Cannery. Chuck Carlson added a reminder of the Annual club business meeting being moved to the end of March on the 26th. Details on these events will come via email and the club newsletter. It turned out to be a great event with a lot of questions, answers, and knowledge sharing. It is good to see everyone there.

Happy Rails,



Norm Baullinger gives us the lowdown on his 3D printing experience.

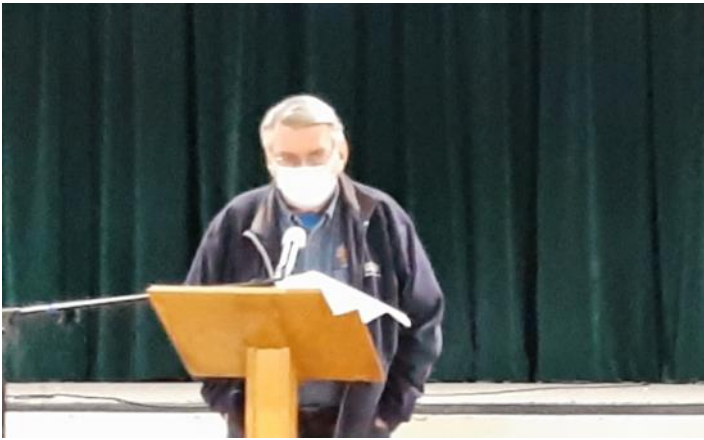


Bob Stevenson (L) and J.T. Gehrke tell us about the maintenance needed to keep locos operating several hours on a daily basis. Examples of worn motors, wheels and other parts shown below.



Continued on next page

Continued from previous page.



Alex Osenbach provided detailed instructions on module setup and take down.



A few items for sale.



Mark Howe showed us the wheeled train carrying boxes he built.



One of Mark's train boxes.



Jerry Madsen described how he made a locomotive test stand.



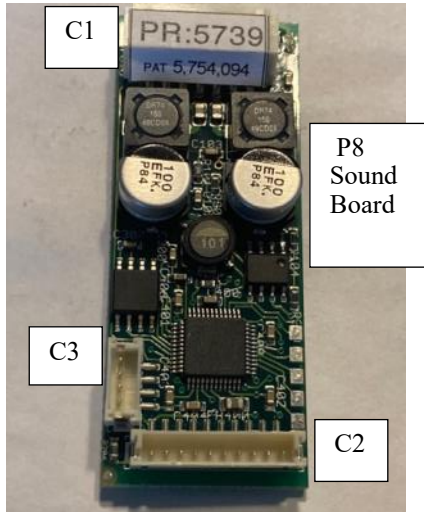
Chris Johnson's train in a bottle.



Programming a Phoenix Sound Card

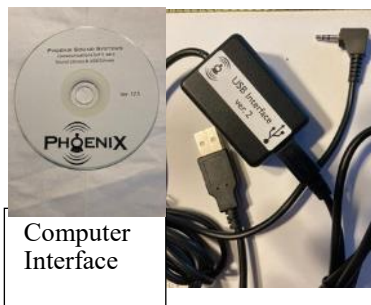
By Norm Baullinger

For all my battery powered locomotives I use AirWire decoder/receiver and throttle systems. For sound, I use a Phoenix Sound Systems, P8 sound board. The P8 connects directly to an AirWire decoder board. I generally use a G3 (G4X is the newer version) decoder.



I've always ordered directly from Phoenix Sound Systems or another retailer and they program the board to the locomotive that it is going to be installed in. However, I now want to remove the sound board from an existing locomotive and put it into a different locomotive. My problem is that I couldn't find any manual describing the programming process. Therefore, here is what I learned by trial and error for re-programming a P8 sound board that I'm putting into a Northern steam locomotive. I suspect that the programming process for their other sound boards will be similar.

First, before one can change the sound on a board, you need to have what Phoenix calls a "Computer Interface". This is composed of a disk that you need to load onto your computer (note, PC only, Windows 10 – no MAC) and an "interface box."



The "interface box" has a cable with a USB on one end and a 2.5 mm mini connector on the other end. A cable that comes with the sound board has a connector that plugs into the C3 receptacle on the sound board and the other

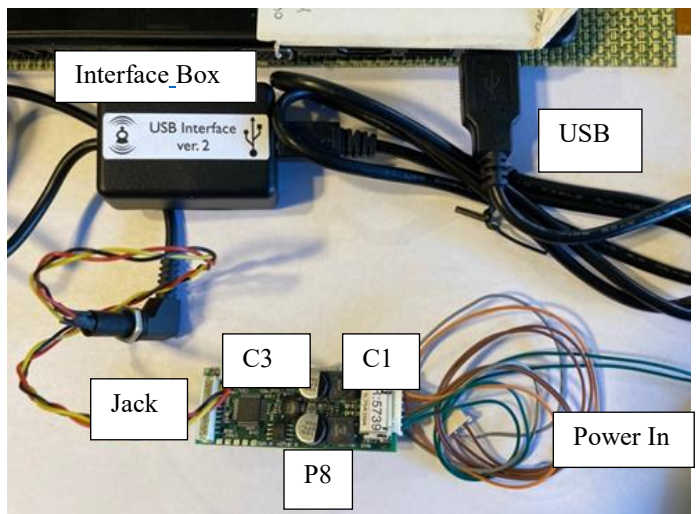
end has an access jack for the mini connector from the interface box. The other end of the interface box connects to your computer via a USB.

The disk contains the program and all the locomotive sounds that they have; diesel, steam, US and English locomotives. The sounds are contained in a file labeled ROM. All files on the disk need to be loaded to your computer.

If you don't have the computer Interface program and just want to hear the whistle/horn sounds they have, you can go to their web site, www.phoenixsound.com. On the window that opens up, there will be ribbon where you can find information about the company, products, sounds, etc. Click on *Sound*. On the next window you can select the type of locomotive you are interested in. Click on the type of locomotive you want and a second *Sounds* window will open for that type of locomotive. Click on the locomotive photo to activate the whistle/ horn sound for that locomotive.

To program the sound of a specific locomotive, you also need a sound board, a P8 in my case, and the associated cables that come with it. These cables include the C3 plug and cable mentioned above, a C2 plug and cable, and a C1 plug and cable. Sounds can be controlled from the throttle via DCC. To use DCC the orange wire (grey not used) from the C1 plug must go to the DCC "output A" terminal on the G3 board. The G3 decoder isn't required for programming.

The C2 plug and cable are not needed for programming. The C2 cable is only needed for two things. One is if you are going to control the volume via an externally mounted switch that comes with the cable. The other is if you are going to be using external "triggers" for some sounds; e.g., in my case, a reed switch for the chuff of my steam locomotive. Without the reed switch, the chuff can be pre-programmed in the sound board.



For programming, you just need the C1 and C3 cables. You use the C1 cable to connected power to the sound board via the two green wires coming from the C1 plug. Voltage has to be over 12 volts, but less than 24 volts (max

Continued on next page.

Continued from previous page.

G3 peak board voltage). Polarity doesn't matter. No other C1 wires are connected to anything.

To get ready to program, your computer should be turned on but the program not opened. The sequence is: plug the C1 cable into the sound board, provide power to the board via the two green wires (don't turn on now), plug the C3 cable into the board, plug the interface box cable mini connector into the other end of the C3 cable, plug the USB from the interface box to your computer. Make sure the mini connector fits securely, all the way, into the access jack. Now turn on power to the board, and then open the program using the icon on your desktop (I assume that is where you put it when you installed it). You should get a window with a big banner saying "Phoenix" with five pull down menus at the top. Check the pull down menu "Port", it should be COM3. If it comes up COM9, change the USB to a different USB slot on your computer. At the bottom of the window, in the center, you should see what board type you are connected to....in my case P8. If this isn't your board, go to the "Tools" pull down menu and select the board type you have.

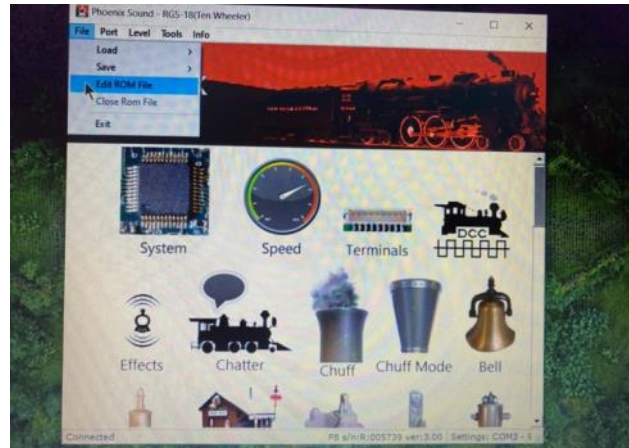
If you opened the program before you turned on power to the board, you may get a message "Disconnected" at the bottom of the window. If so, turn off the power to the sound board, check all connections, and close the program. Now turn the power back on to the sound board, and then re-open the program. You should now see a message "retrieving Big Sound parameters", then a message "connecting", then "connected". You need to be "connected" to be able to program.

Next, go to the "File" pull down menu, select "Load", then "Entire ROM File". A new window will open with all the locomotive sounds. Select the locomotive you want, then click "Open", lower right. You will be returned to the previous window. You should get a message at the bottom of the window saying "erasing ROM". That's the sound file currently in the sound board. Then a message "loading sounds" should come up. These will be the sounds for the selected locomotive. Be patient, it may take a few minutes.

When completed, a window will open with all the sounds (icons) and associated parameters you can change for this locomotive. At the top of the window, it should indicate what locomotive sound file you have loaded onto the board. Select a sound; whistle, chuff, bell, etc., and set the parameters to what you want. There are three levels of programming that control the detail (parameters) that you can modify. I always use level "advanced" as this gives you the most flexibility. Some (most) sounds can be controlled via DCC, via the throttle function keys. Some sounds can be set to use triggers via a pin (C2 cable needed). As I use the throttle to control my sounds, any parameter with "pin", I make zero or none except the chuff sound as I use a reed switch which requires the "pin" input. Parameters with DCC, I use and

assign a function key to it if you want to control it via the throttle. Otherwise, I use "none", and I don't use that sound. You need to set the individual sound to use one or the other or none. Note, there are only 12 function keys available on an AirWire throttle so you will be limited to 12 sounds via DCC per locomotive. Depending on the locomotive selected, some sounds and parameters may not be available.

Keep the board powered all the time while you are "playing" with the parameters. When done, go to the "File" menu and click on "Exit". You are done and you can disconnect the board and associated wires.



Locomotive Parameter Window

There is a standard set of functions (numbered keys) on the AirWire throttle to execute many of these sounds via DCC. The "standard" function keys for DCC controlled sounds, for a steam locomotive, are included at the end of this article.

Some sounds can be controlled via an external "trigger". One common trigger for a steam locomotive uses a reed switch attached to the wheel/axle with a magnet that will trigger the "chuff" sound. (Or the chuff can be pre-programmed, and controlled, via a voltage parameter.) There are several manual triggers like this that can be programmed to send a signal to the sound board. These triggers have to be connected to the board using the C2 plug and cable, (e.g., wires from a reed switch, if used, connect to pins (wires) 1 & 2 on C2). Otherwise, leave the trigger wires "bare", not connected to anything.

And if not using any triggers (pins) or the external volume switch, you don't need the C2 plug and cable for installation.

In setting the volume level, 100% represents the volume the sound was recorded at. Replaying at the 100% level may be too loud and cause the sound to be distorted. I generally use between 50% and 75%. The overall level for all sounds is controlled by a parameter under the "System" icon.

Continued on next page.

Continued from previous page.

If you want to change the parameters of the various individual sounds later, when installing, make sure you keep the programming cable, C3, attached to the board and install the interface box access jack somewhere where it is accessible. It is suggested that you program the board before installing it in your locomotive or tender, or wherever you put it. If you are not going to do this, you do not need the plug and cable C3 to “run” after installation, only if you want to re-program the board later. If you do install the cable C3 and the access jack, you can edit your sound card with everything installed and test out your edits as it will be connected to your decoder. You will need the interface box and your computer to do this. When installing the sound board, it is recommended that you install a switch to turn the board power on and off.

One more thing. When you are all through modifying your parameters, make sure that the address your sound board is set to is the same address as your decoder (receiver). You will find it as a parameter under the DCC icon.

To check that you have a good board, you can do a bench check before installing. Wiring for that should be in your sound board manual, but here is the short version. Connect a power source (9 volts or more) to the board via the plug C1, using the two green wires and the orange and grey wire.

Connect a green wire to the grey wire, *and* the second green wire to the orange wire. Connect one set of wires to your power supply plus terminal and the other set to the mi-

nus terminal, polarity doesn't matter. Don't turn on the power yet. Connect a speaker, 4 ohm, to the two brown wires from C1, which may have a plug on the end to match up with the plug from the speaker (if purchased from Phoenix). Turn on the power and you should hear sound. If you want to control the sound volume, plug in the C2 cable with the manual volume switch. The C3 cable is not needed here. You can't check the individual sounds, just that the sound board works. You need to be hooked up to a decoder to try the various sounds you just programmed into your sound board.

For further information, Google *Phoenix Sounds Manuals*, and you will get many links for the various sound boards they have as well as general information. These manuals provide additional descriptions of the sounds, but not the programming process. It is worth downloading some of these manuals. I keep a hand written list of all the parameters I use.

Standard function key sounds: F1 bell, F2 manual whistle, F3 coupler clank, F4 crossing whistle, F5 coal loading, F6 water fill, F7 volume up, F8 volume down, F9 blow down, F10 station announcement, F11 chatter, F12 shutdown. Any of these can be made “momentary” (plays as long as key is held down) or “latched” (stays on till key pressed again). The function key and associated sound can be changed under each respective icon. An individual sound can be made latched or momentary under the DCC icon.



Foss Maritime Museum Rails to Sails

By Jerry Madsen (Ed. Note: This is the same information in a Feb 22 email to all members forwarded by Tom Briggs.)

I was recently contacted (in January) by Bud Thompson with the Foss Maritime Museum in Tacoma. The museum has an older “G” scale layout which was originally constructed many years ago by several members of our club. Our club has been asked to assist with running trains on the small layout at the Foss Maritime Museum in Tacoma on March 17th to the 20th. We will need one or two people to run trains. Please contact Jerry Madsen (geraldmadsen@comcast.net) to volunteer.

Everything is there to run including the trains; all we need is volunteers to educate the public about the trains and demonstrate switching operations while the museum is open from 10AM to 4 PM. The layout is only 10.5 feet long by 7 feet wide and all the curves are 4 foot diameter, so only 0-4-0 locos and small freight cars can run on it. You can bring your own train but just know you may have to park across the street and they must be able to run on the tight curves.

At the end of the show the museum would like to find a good home for the layout and offered it to our club. The original idea was for us to find a temporary home for the

layout and bring it back for the annual event at the Foss Museum. Alex Osenbach and I made a trip to the museum on February 12th to meet with Bud and check out the layout and decided it was too heavy and not portable enough to make frequent moving feasible.

We found out the 2x4 support structure and the skirting would have to be removed to make it light enough to lower onto dollies to move it. Then it would be rolled onto my car trailer and taken to my home where I was going to dismantle it to auction off the track to the club. We estimated it would take 6 or more members to manhandle this operation. We planned to do the dismantling and move the layout on Sunday the 20th after the museum closes at 4PM.

However, after hearing about the layout at the recent club clinic presentations, Bob Stevenson said they would take it to the Old Cannery in Sumner and use it as part of their Christmas display. I will, however, take the rolling stock home, make repairs, and auction them off at our Christmas party this year. Bob said they will bring one of their trucks to come get the layout instead of taking it to my house thus saving it to run trains and continue to entertain train enthusiasts.

Happy rails.

Photos on next page.



*The G gauge layout at the Foss Maritime Museum
Photos by Alex Osenbach.*

Editor's Editorial—Hosted Meetings

By Bill Thurston, Editor

Mark Jennings, our club meetings coordinator, has been trying valiantly for several months to get our normal 6 months of member hosted meetings scheduled for 2022. The member hosted meetings were of course interrupted by the Covid mess. However, last year the club was able to resume them and we had all six meetings enjoyed by many.

This year only 4 members have stepped up (and many thanks to them) to host the May, July, August, and September meetings. And thanks to the Old Cannery, we will have a module setup to take the place of the June meeting that no member offered to host at their home.

I find it very disappointing that my favorite club sponsored activity is receiving so little support. The hosted meetings give folks an opportunity to see what is possible and I am always finding something I would like to try on my layout when I get the chance to see what others have done. Sometimes you see what would not work for you, and that is just as valuable. And of course just getting to meet more members and exchanging ideas and experiences in garden railroading is the best part.

I know that if you have not hosted a meeting, it may be a bit intimidating to offer to do so. It took Kathy and me a couple of years after starting our railroad (it is never finished) before we hosted our first meeting. Was it going to be good enough? Were veteran garden railroaders going to be bored, critical, or what? I should not have worried. Club members were very social, kind, and had only positive things to say (I am fully aware that there were, and still are, many things to be critical of on my layout. Just remember that one of our club tenants is that it is your layout, and you can do what you darn well want to.

So I encourage all members who have not hosted a meeting, or it has been several years since you did so, please take the opportunity to host the April meeting. You are not expected to provide food—we typically have a potluck and can probably return to doing so with the covid situation seeming to improve. And we can, and have, brought our own food if a potluck is not yet a good idea. A place to sit is nice, but even for that, you can ask members to bring their own chairs, and an umbrella if rain is in the forecast. If you can provide coffee, water, and other soft drinks that would be great, but again, just let the membership know ahead of time and they can bring their own drinks as well.

It is not too late—go for it. If the normal 3rd Saturday of the month for our meetings does not work for you, just suggest another Saturday in April. Send a note to Mark Jennings (m.jennings32@gmail.com)

Thanks.



A Passing

By Bill Thurston

I am sorry to report that long time member Ken DeBord has passed away. His wife Arleen relayed to me that a memorial will be held at noon on March 19 at the Real Life Church, 26201 180th Ave S.E, Covington, WA. Club members are welcome to attend. Ken was instrumental in arranging for the club to have our April 2021 meeting at the church which has an outdoor G gauge layout.



View from the Club Car

By Mark Howe, Membership Chair

Welcome to March and a Big welcome to our newest club members. I have been lax in giving public welcome to new club members and I am sorry for that. I would like to start welcoming new members with a mention in this Newsletter! At the end of last year we had new members Jeff & Wendy Armstrong of Gig Harbor and Jim & Joyce Wendlandt of Tacoma. After the start of 2022 we welcome in Jimmie & Celia Nord of Bonny Lake, Gregory & Susan Wright of Olympia, Patrick & Leigh Ann & son Oliver Hines of Woodinville and Dick & Joan & son Wayne Meyer of Enumclaw.

We also have a few club members that I want to thank for paying their 2023 dues already!

The 2022 Clinics are done but will not be forgotten! I taped the clinics and I am in the process of making a video for each of the clinics. I did not get the best voice recording so you may need to turn the volume up when listening to them. I will post them on my YouTube channel and ask Tom to send video links to all the members. I will also post them in the PSGRS Facebook page. Here is the introduction

by Jerry Madsen and the Show & Tell: <https://youtu.be/P2plFcu1fhQ>

It looks to be a good year for running trains. **We do have a special request for those that can help and would like to get an early peak at our train modules!** The racks in the trailer got loose and need to be removed from the trailer, new tiedowns installed and then replace the racks. This can all be done at my home in our driveway with the assistance of 6 to 8 people on a good dry day (maybe in a couple months). We did this once when we were redesigning some of our modules last year. We will send out a notice when it gets close to the time.

Be safe, stay healthy, we'll see ya down the rails.



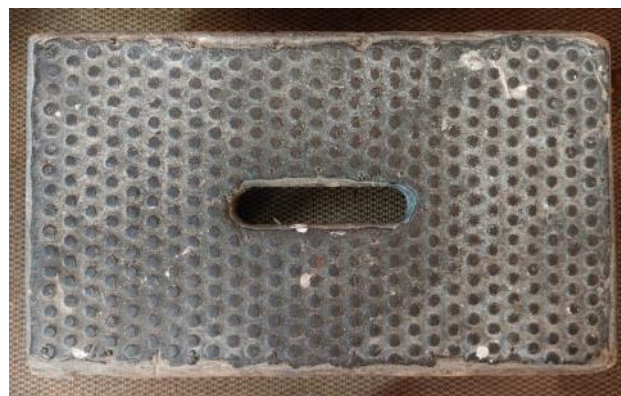
So What is it?

By Ed Mattison

Last month's 'So What Is It?' is a builder's plate from a Porter Locomotive built in 1914. This one is actually a replica of one off of a standard gauge 0-4-0T that is at the Ironhorse Central Railroad Museum in Chisago, MN. She was No.1 on the DTR. These were cast and sold several years ago as a fundraiser.

Congratulations to Eric Thompson for the quick correct reply.

Here is this month's 'So What Is It?'



Club Special Interest Groups (SIGs) and Regularly Scheduled Events

Big Liars Club

Meets the 4th Thursday of each month at 9:00 AM at Redmond Family Pancake House 17621 Redmond Way, Redmond for breakfast and friendship. Latecomers are always welcome. Contact Beth MacLaren at: bethdonmaclaren@comcast.net for more information.

Little Liars Club

Not currently active.

West Sound Liars Club

Meets at 9:30 the 2nd Thursday of each month at the Family Pancake House, 3900 Kitsap Way, Bremerton for breakfast and friendship. Contact Bill Thurston at thurston.bill@gmail.com for more information.

Tall Tales Club

Meets at 9:00 AM on the 1st Thursday at the Buzz Inn, 9900 Airport Way, at Harvey Air Field in Snohomish. For more information contact Mark Howe at : psgrshowe@gmail.com

South Sound Liars Club

Meets on the first Wednesday of the month at Knapp's Restaurant, 2707 N. Proctor, Tacoma at 9 AM for breakfast and friendship. Contact Chuck Carlson at 253-927-7062 for more information

Live Steam SIG

The Live Steamers meet on the 2nd Saturday of every month at Chris Johnson's. We also meet at a member's home as shown in the steam-up schedule. Contact John Bigelow (206-284-5038) or Peter Comley (253-862-6748) for further information

Modules SIG

Constructs and displays the club modular layout at various shows throughout the region. No set schedule, but shows are publicized well in advance. Contact Alex Osenbach (206-369-2446) to join.

Boating SIG

For PSGRS members who are also interested in rc model boats. Normally meets the 1st Saturday after the 1st Thursday 0900 to 1200 at the Bellevue Pond Park just south of Bellevue Square Park during the warm months and at the Seattle Yacht Club during the winter months. Call Dave White at (425-269-9277) for further and latest information. .

Operations SIG - Briggs

Open only in June and September on the second Friday from 2:00 PM until 9:00 PM at Tom and Judy Briggs' home. Battery powered engines available for visitors to use. Call Tom at 425 885 3894 for more information. Additional days may be announced later.

Schedules and Stops

Date	Time	Event	Place	Comments
March 26	Noon until finished	Business meeting	Zoom meeting	Note change from 3rd to 4th Saturday
April 16	Noon to 4	Member Hosted Meeting	TBD	
May 21	Noon to 4	Member Hosted Meeting	David and Judy Drake, Ferndale	
June 18 -19	Store hours	Blended monthly and module Meeting	The Old Cannery - member Bob Stevenson helps maintain store's railroad.	The modules will be set up at the Old Cannery June 17
July 16	Noon to 4	Member Hosted Meeting	Jerry and Cindy Madsen, Kent	
August 10-13		Skagit Fair	Mt Vernon	Set up date TBD
August 20	Noon to 4	Member Hosted Meeting	Norm and Gale Baullinger, Bellevue	
Sept.17	Noon to 4	Member Hosted Meeting	Dick and Patti Cranor, Pt Angeles	Dick Wolf who lives nearby will have his layout open also.

Dues are overdue. Dues are \$36.00 per year payable each January first. Send dues to Mark Howe, POB 1551, Woodinville, WA 98072. Dues must be paid to participate in March 26 business meeting.

Steamers Schedule

March 12	Johnson	Jun 26-	Overland	Sep 21-24	probably Staver, tbd
March 27	Comley	July 9	Johnson	Sep 25	TBD
April 9	TBD	Jul 13-17 Summer steamup	Lodi CA	Oct 8	Johnson
Apr 21-23	Staver Cancelled	Jul 24	TBD	Oct 23	TBD
Apr 24	Montgomery	August 13	Johnson	Nov 12	Johnson
May 14	Johnson	August 21	Buchan	Nov 27	TBD
May 29	Buchan	Aug 28	Cole	Dec 10	Johnson
June 12	Johnson	Sept 10	TBD	Dec 26	Comley



2022 NATIONAL GARDEN RAILWAY CONVENTION

DENVER GARDEN RAILWAY SOCIETY
JUNE 20-25 2022 ▶ DENVER CO

SAVE THE DATE

VISIT NGRC2022.ORG

REGISTER NOW & SAVE!

- ◆ Individual Registration
\$75 by March 31, 2022 - \$100 thereafter
- ◆ Family Registration
\$125 by March 31, 2022 - \$150 thereafter

REGISTRATION INCLUDES ▶

- ◆ Visit 40 + Layouts Scheduled for the Convention
- ◆ Access to Vendor Hall, Welcome Reception, Clinics and Convention Store
- ◆ Participation in the Convention Model Contest and Youth Model Contest
- ◆ Convention Bag, Program Book, and Commemorative Convention Pin

ADDITIONAL OPTIONS ▶

- ◆ Four Pre-Convention Bus Tours – Transportation, Admission, and Lunch
- ◆ Post-Convention Bus Tour – Includes Transportation and Admission
- ◆ Banquet, Ice cream Social and BBQ at the Colorado Railroad Museum
- ◆ Bus Transportation to Layout Tours and BBQ
- ◆ Limited Edition Logo-branded Rio Grande Caboose Only \$98 with Registration

Other events of possible interest to club members*

** If you know of a railroading event that you would like to see posted here in the future, please send it to me (Thurston.bill@gmail.com) .*

Date	Event	Website
Third Friday afternoon and evening of each month.	Operation sessions @ Goodson's (Briggs info on SIGs page)	Please call Dave(425 823 3507) for details and invitation.
March 17 - 20, 2022	Annual Rails to Sails Train Show 705 Dock Street, Tacoma WA.	4th Div nmra Also see page 6.
June 20 - 25, 2022	National Garden Railway Convention: Denver	https://ngrc2022.org/
Sept. 1 - 4, 2022	National Narrow Gauge Convention. Tacoma	seattlenngc.com
July 3 - 9, 2023	National Garden Railway Convention: Bay Area	https://ngrc2023.com/

Local Sources for Garden Railroading Stuff*

What	Who	Contact Info	Recommended By
Track, switches, trains and more	Sunset Valley, Bonny Lake	https://www.sunsetvalleyrailroad.com/	Bill Thurston
Ballast, rock, water features, landscaping materials	Walraths, Gig Harbor	https://tewalrath.com/landscape-supply/gig-harbor-wa-landscape-supply/	Bill Thurston
Bridge topping for ballast	Manufacturers Mineral 1215 Monster Rd SW Renton, WA 98055	http://manminco.com/	Alex Osenbach
Plants	NW flower show, Seattle	https://gardenshow.com/	Bill Thurston
Plants	Brothers Greenhouses, Port Orchard.	https://www.brothersgreenhouses.com/	Bill Thurston
Small ground cover and evergreens	Molbaks, Woodinville	https://www.molbaks.com/	Beth MacLaren
Plants	Sky Nursery, Shoreline	https://skynursery.com/	Beth MacLaren
Plants	Swansons Nursery, Seattle	https://www.swansonsnursery.com/	Beth MacLaren
Small Plants	Tsugawa Nursery, Woodland	http://www.tsugawanursery.com/	Gale Baullinger Chuck Carlson

- If you have local sources you would like to recommend, send them to me (thurston,.bill@gmail.com) and I will add them to the chart Bill Thurston, editor.

Puget Sound Garden Railway Society

Officers and Staff

<i>President</i> :.....Chuck Carlson <i>Vice President</i> :.....Mike Phillips <i>Treasurer</i> :.....Alan Melrose <i>Membership</i> :.....Mark Howe <i>Secretary</i> :.....,Jack Kowitt <i>Meetings Scheduler</i> :..... Mark Jennings <i>Website Honcho</i> :.....Mike Phillips <i>The club website is www.PSGRS.org.</i> <i>Keeper of the newsletter Archives</i> <i>Bill Thurston</i> <i>Keeper of the e-mail list</i> :.....Tom Briggs <i>Purveyor of club T-shirts, Sweatshirts, etc.</i> :.....Dwight Malott	<i>tor</i> :.....Alex Osenbach <i>Clinics Coordinator</i>Jerry Madsen <i>Newsletter Editor</i> :..... Bill Thurston <i>Newsletter proofreader</i> :.....Beth MacLaren <i>Maps</i> : Tom Briggs <i>Print circulation</i>Mark and Marie Howe <i>Electronic circulation</i> Bill Thurston
--	--

Please contact the club at info.psgrs@gmail.com if you have any questions about the club or newsletter

Quote and copyright notice:
 Permission is granted to other garden railway societies to quote or reprint any non-copyrighted articles or information originating in this publication. Please credit the author and PSGRS when doing so.