

FOAM CORE BUILDING MOCK-UPS

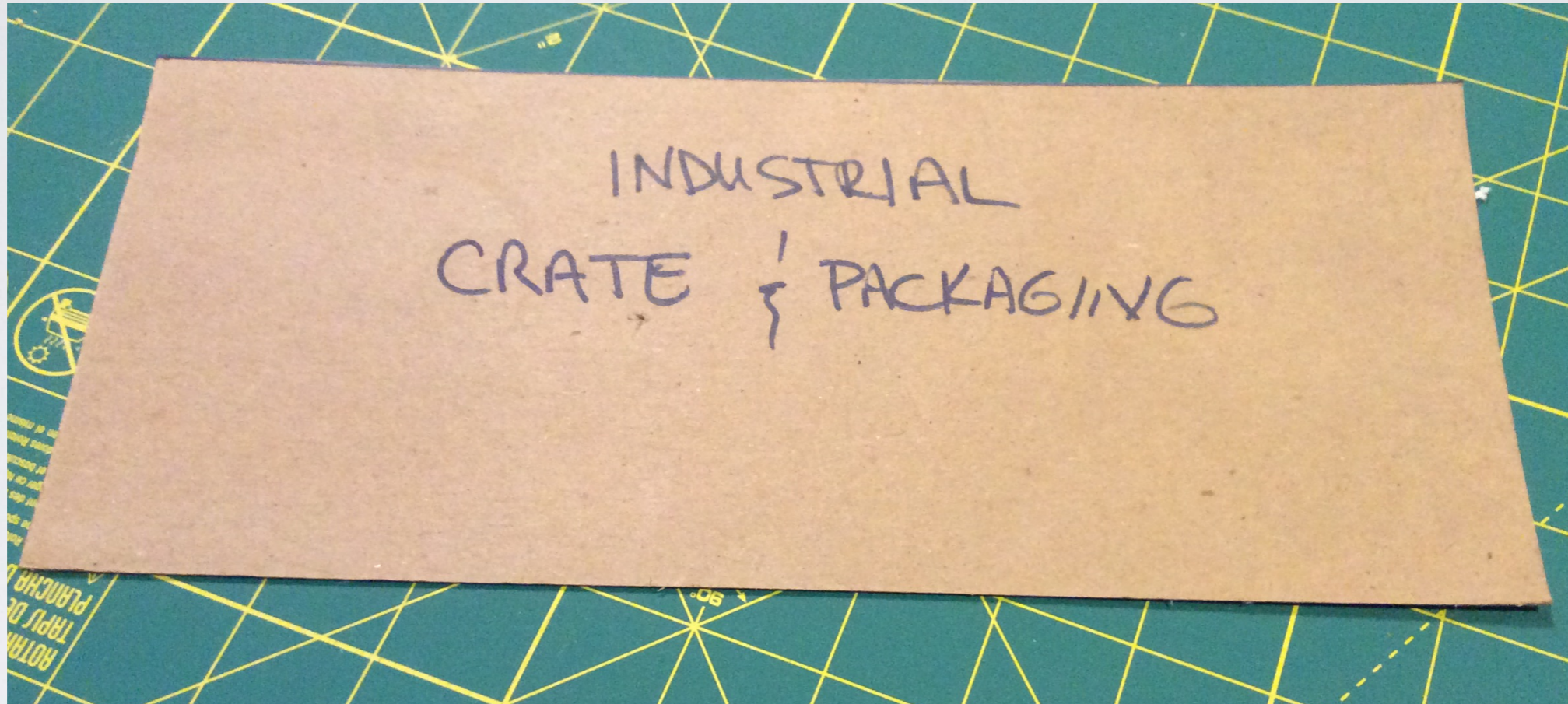
GREG PRICE

MATHESON & WESTERN RR



Premise:

Provide visually appealing buildings as "place holders" for your layout in order to visualize their appearance until actual construction can be completed.



It allows you the ability to in-expensively create the 3D building and see how it "fits in" with the surrounding structures and scenery. All this without destroying the actual kit.

Materials:

Foam core sheets

Thin plywood

Heavy cardstock

Color photo copier

Goo/Rubber cement

Straight edge

Square

Box knife

X-acto knife

Spray adhesive

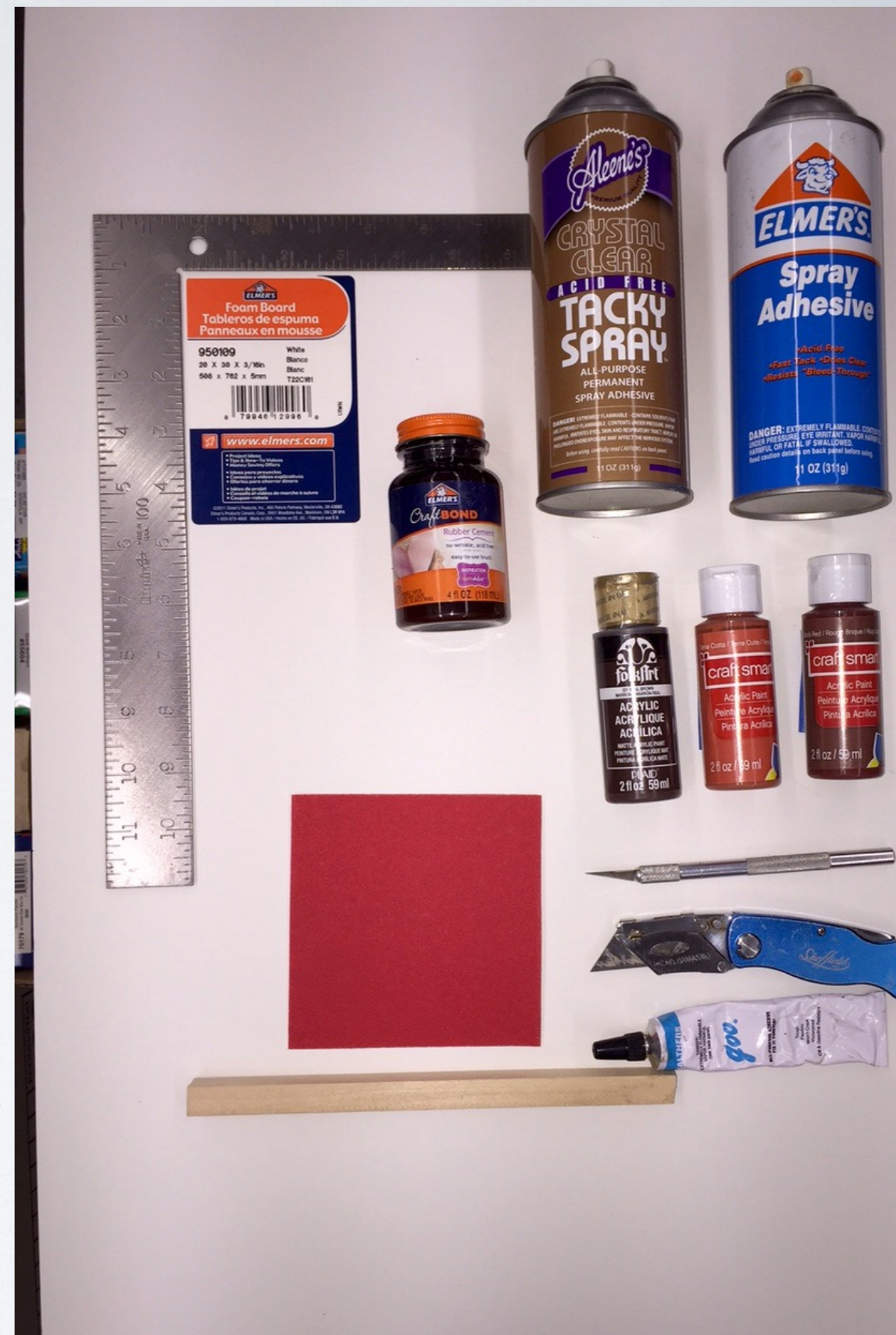
Strip styrene or balsa

Fine sandpaper

Various detail parts

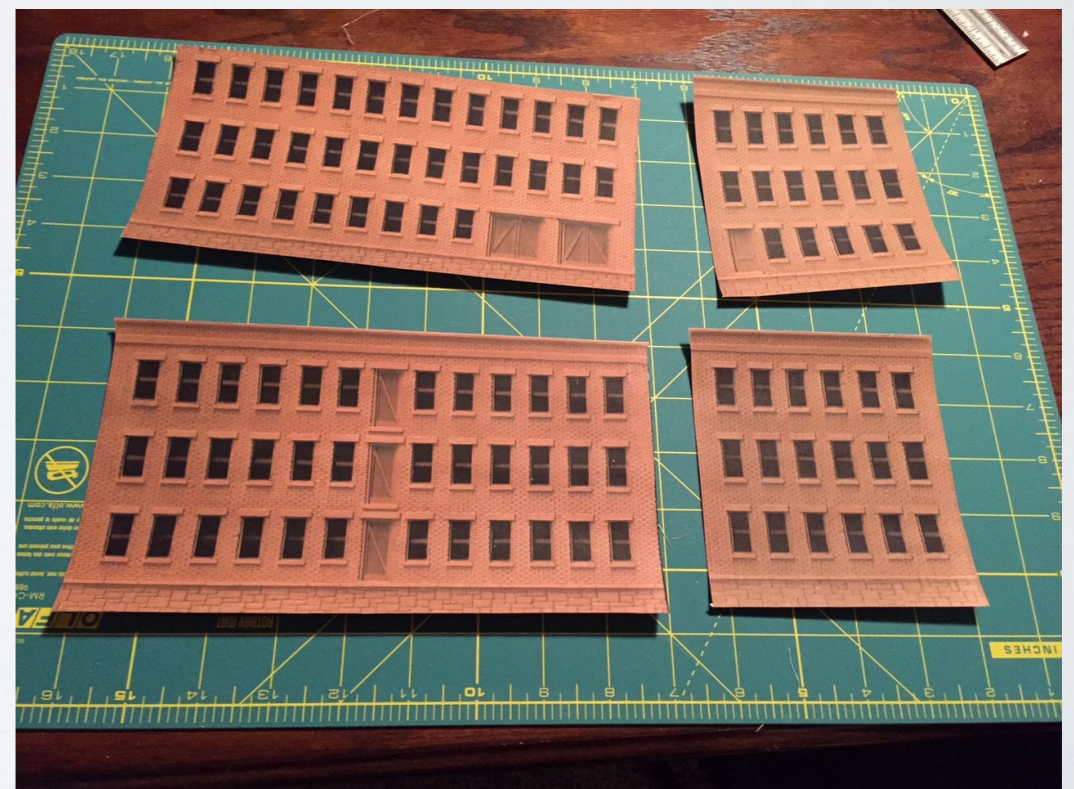
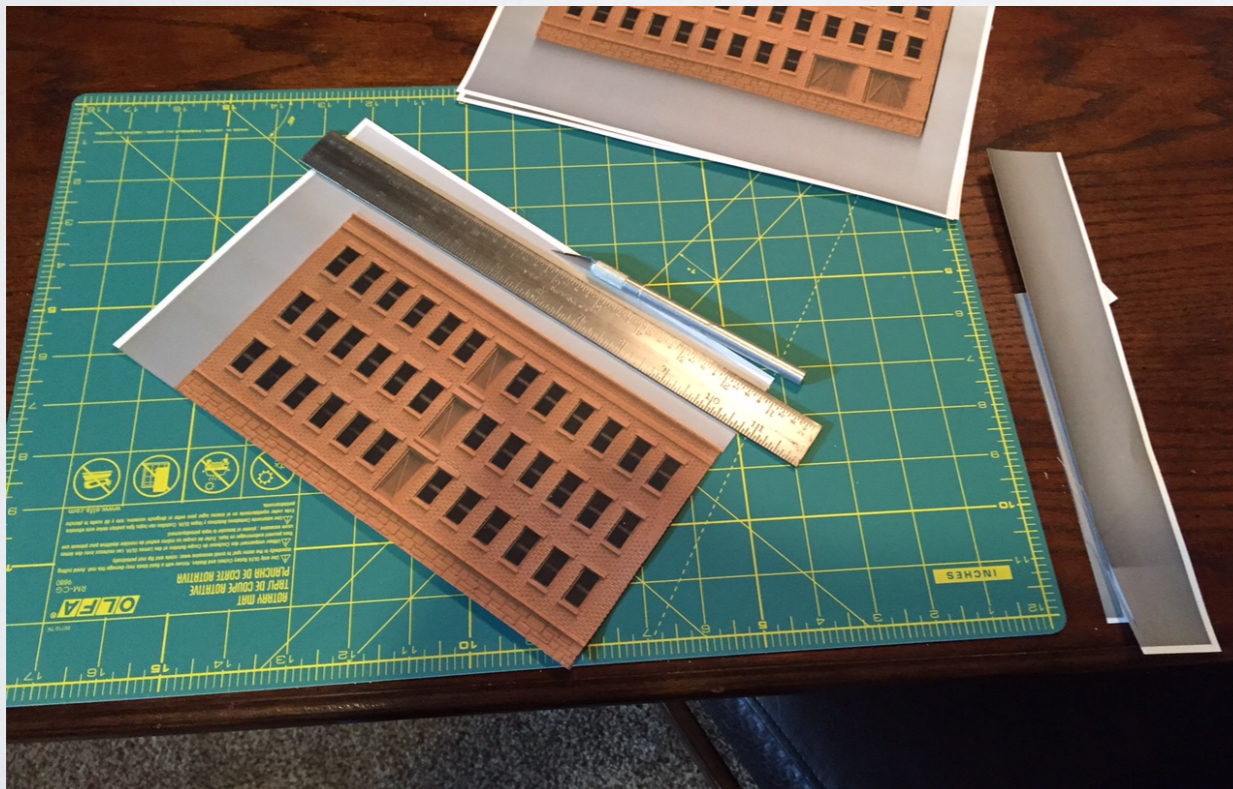
Acrylic paints

Black or Dark Gray construction paper



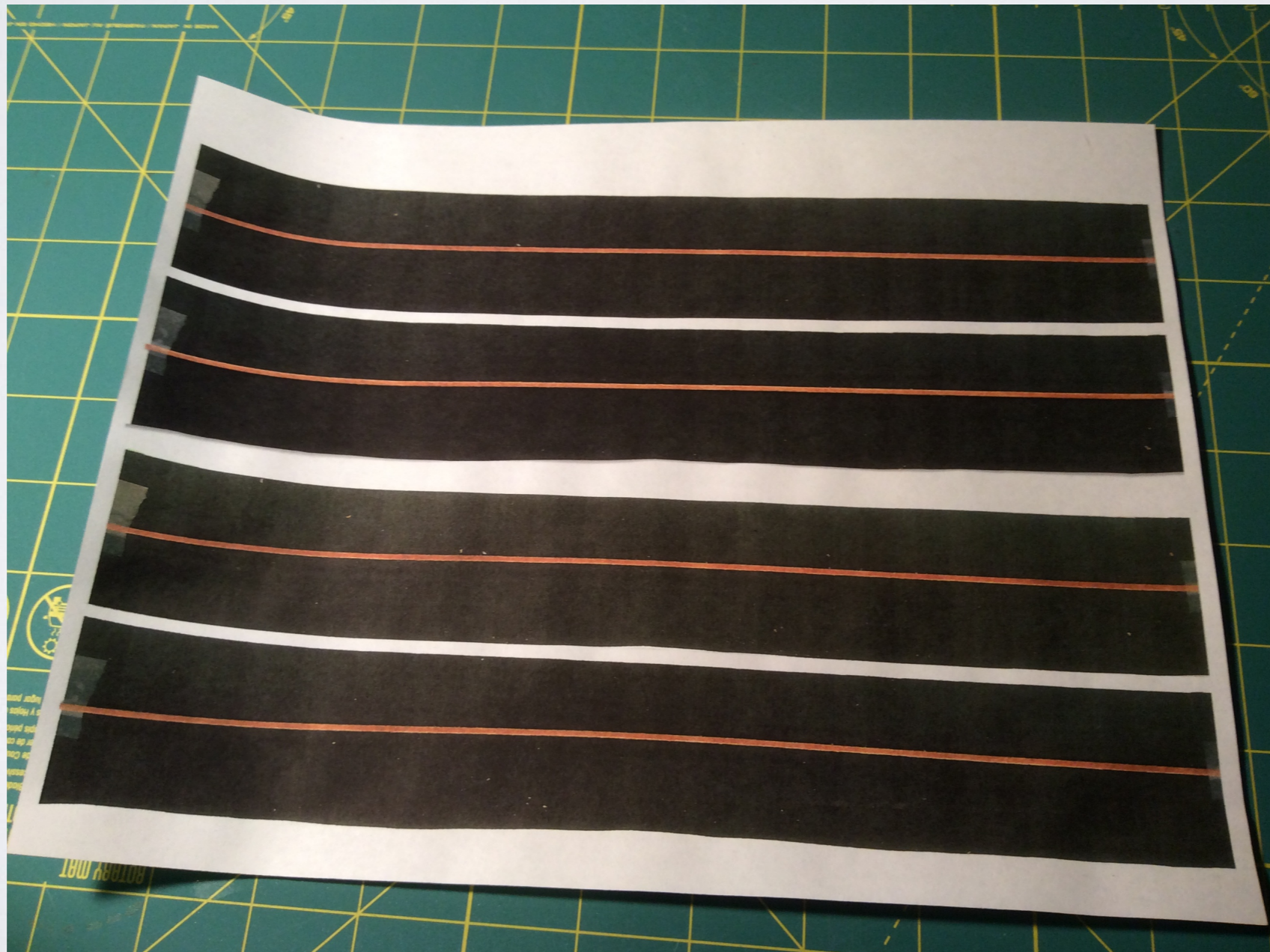
Preparation:

- Start by identifying the location, shape, and size of your future building.
- Select the building kit(s) to be used. Base the decision on wall shapes/sizes to fit various scenarios.
- Photocopy kit walls: Use color on the best setting
- Be sure to use black or gray construction paper behind the windows. (Otherwise they'll show white)
- Cut out the walls from copier paper.



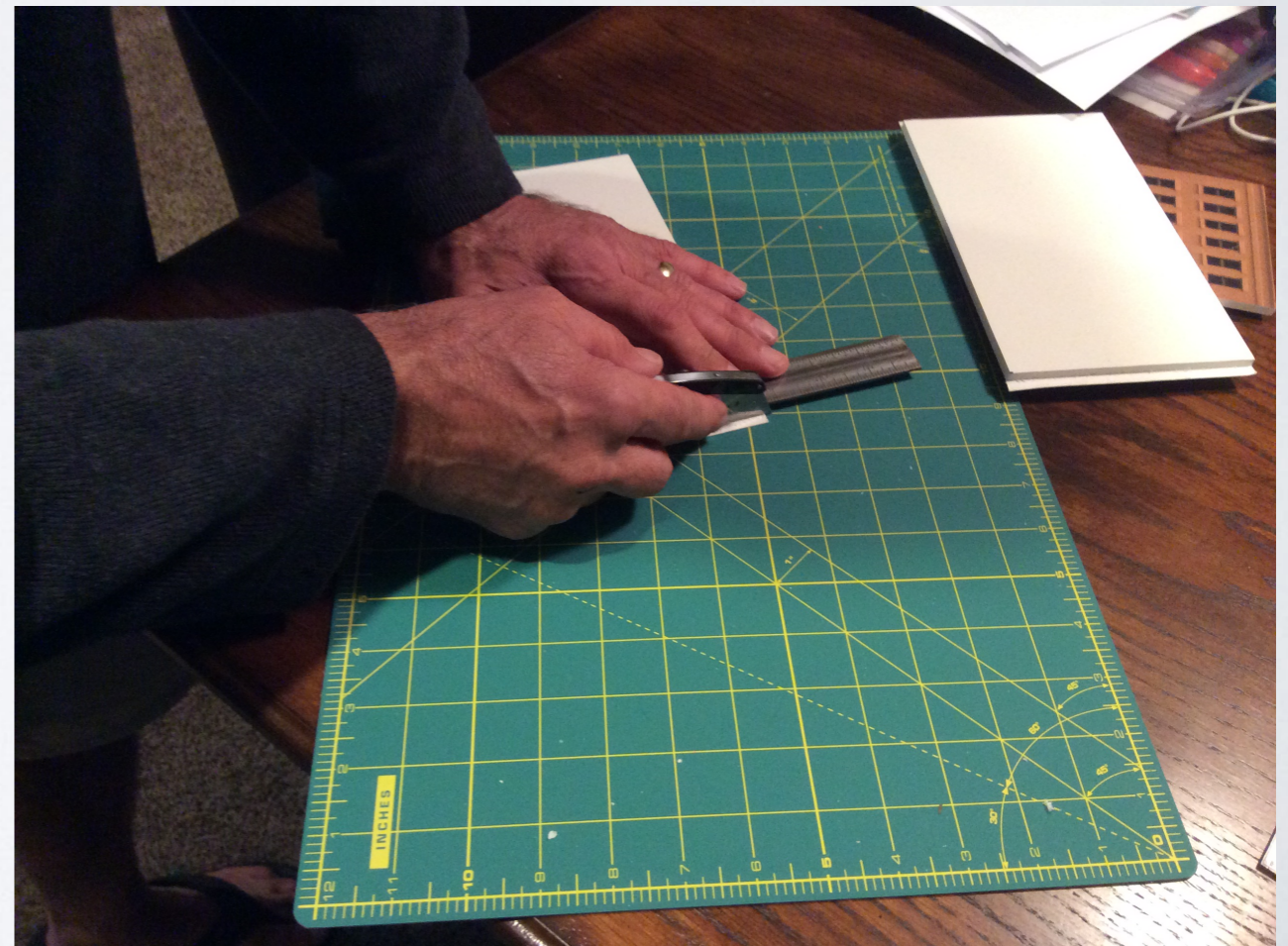
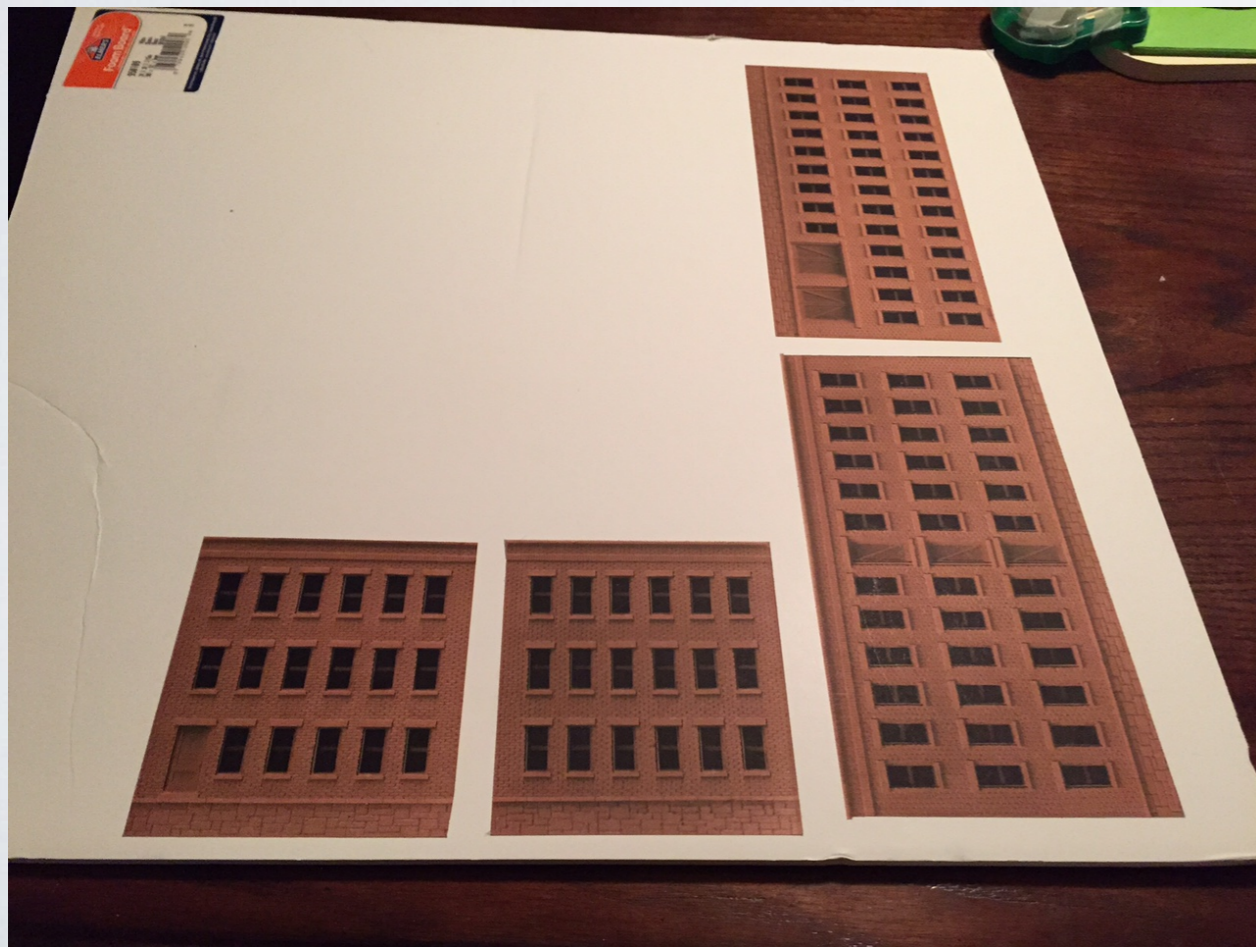
Preparation

- Don't forget the window mullions.
- For kits without window mullions, you can make your own on the computer.
(See example)
- For kits with window inserts, temporarily place them in each window opening for the copy process



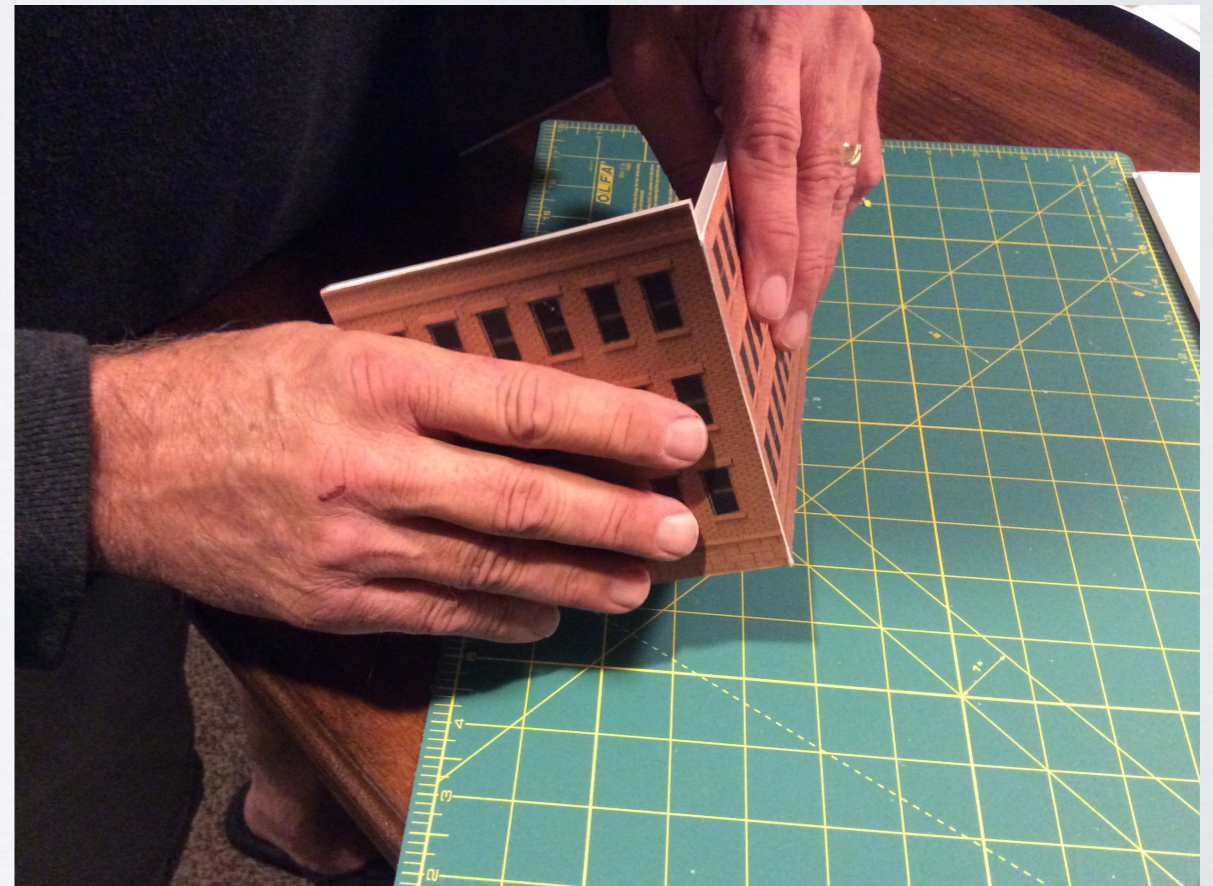
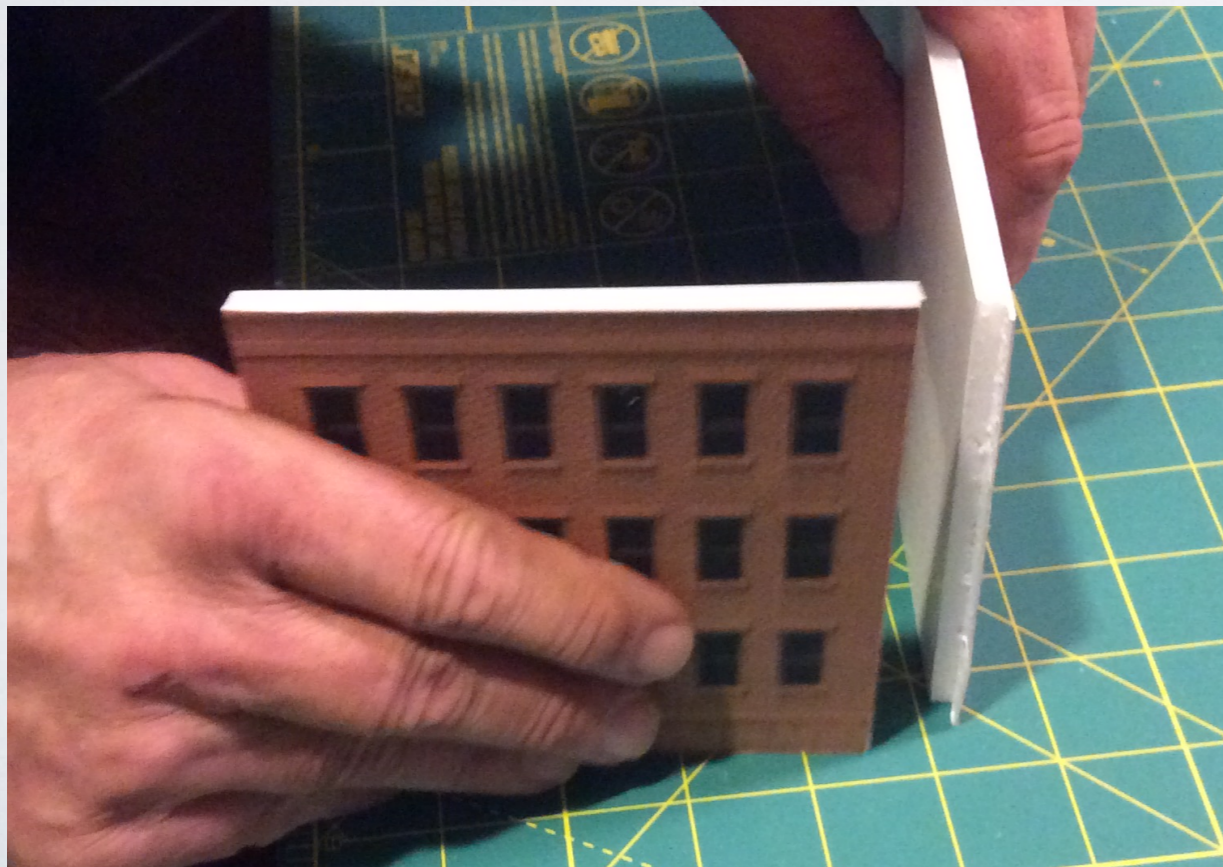
Construction:

- Use spray adhesive to glue photocopies to the foam core. Don't be stingy or the walls will eventually peel away!
- Once dry, cut out the individual walls.
- Determine the size of each wall for the building you are trying to represent.
- Cut the appropriate walls to size remembering you will "lap" one corner of each side.



Corner construction -

- Cut back the edge of the foam core on one wall of each corner to make a lap joint.
- Use GOO to glue the corners of the walls together.
- Touch up the white edges of the building with an appropriate color of paint or with a permanent marker.



Roof:

- Turn the building upside down on a piece of heavy cardstock or styrene.
- Trace the inside dimensions of the roof.
- Pick your roof treatment:
 - Black paint
 - Glue on a piece of fine grit sandpaper, paint black, gray, etc.
 - Tissue paper rolled roofing
 - Commercial roofing materials
- Use balsa or styrene strip to hold roof at chosen height.
- Paint the top edges of the foam ore to match the building color or use styrene or wood as a ridge cap.



Sandpaper - painted black



Commercial roofing materials

Masking tape - rolled roofing



Commercial roofing materials



Detail!

- Use as much or as little as you want.
- Loading docks and roofs can be used over again on the final building.
- Styrene tube for roof vents, chimney castings, etc.
- Don't forget signs, even if temporary, a must for operations!



OTHER OPTIONS

Radical flats

Clever Models

Model Railroad Forum

Trackside Scenery

RADICAL FLATS

RADICAL FLATSTM *HO Scale Industrial Dr #2*



NOTE: This is printed on matte medium paperboard, but because the detail requires SO much ink there is the appearance of a gloss finish. Spraying dullcoat over the sheet is recommended to dull the sheen.

*DO NOT use white glue
recommended to follow instructions*

*copyright © 2012
KingMill Enterprises,
all rights reserved*

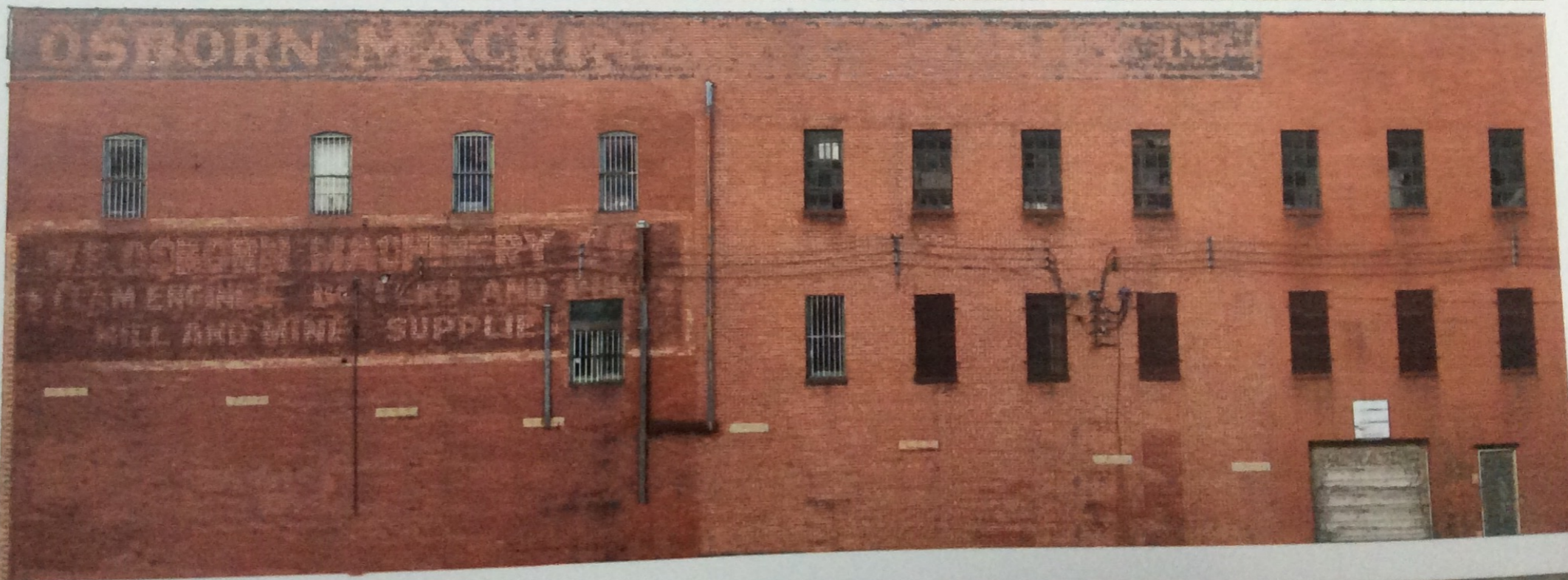
*Instructions and other
Radical Flats materials
available at www.kingmill.com
** MADE IN THE USA ***

RADICAL FLATS™

HO Side St #2

** DO NOT use white glue when adhering ** recommended to follow instructions **

Instructions and other Radical Flats materials available at www.kingmill.com ** MADE IN THE USA

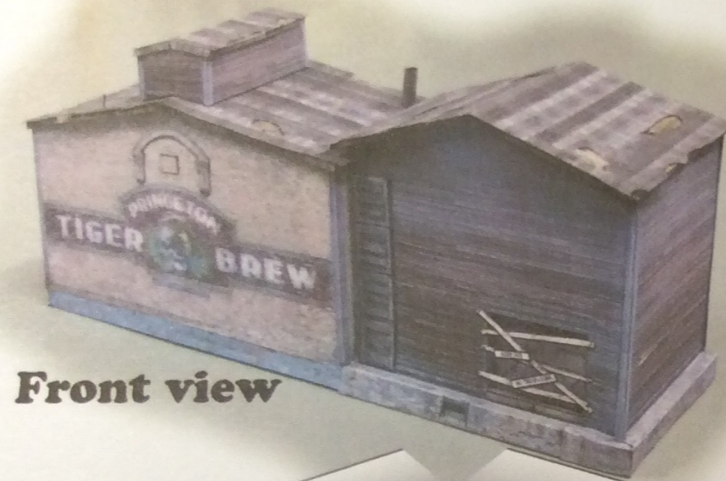


CLEVER MODELS

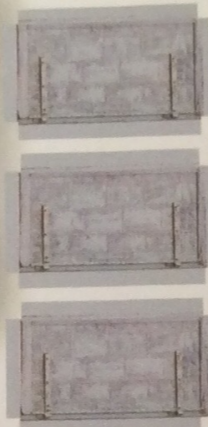


CLEVER MODELS

Princtom brewery by John Kosma



Front view



REAR WALLS

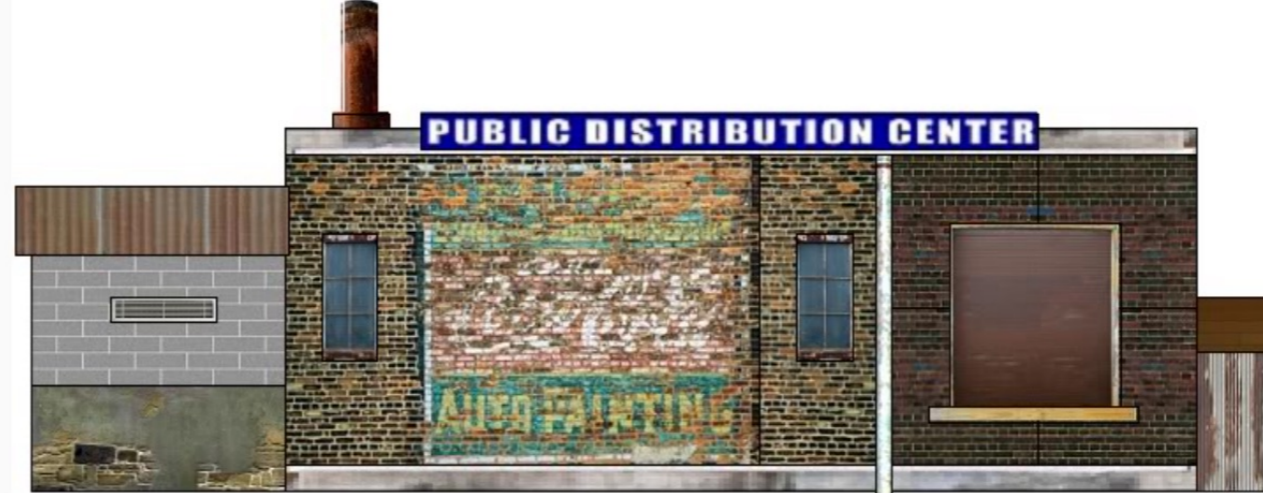




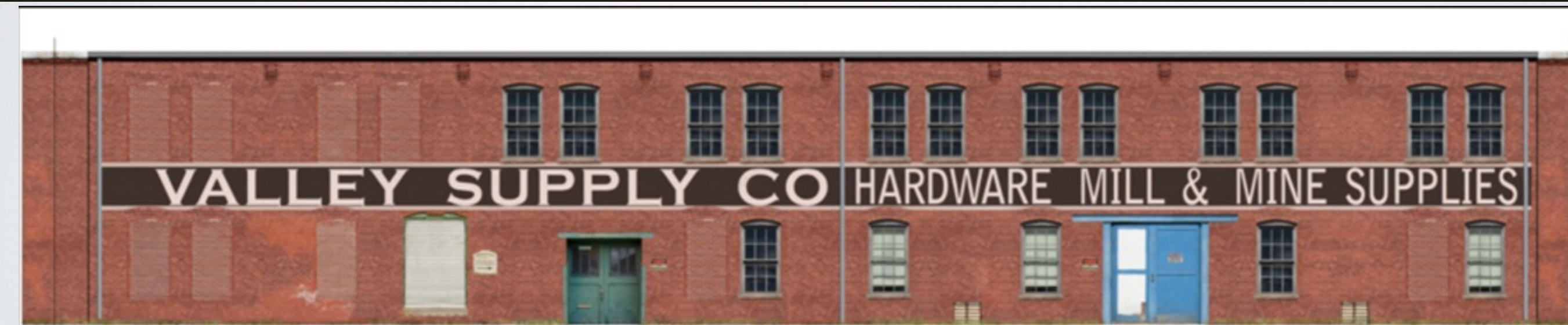
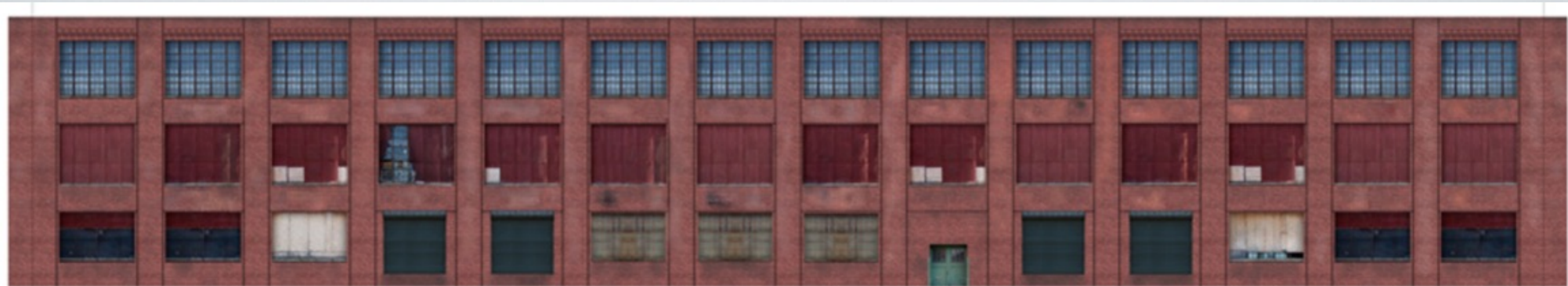
Model Railroad Forum



Model Railroad Forum



Trackside scenery



Trackside scenery



Download & print yourself (sometimes free!)

<http://www.scalescenes.com>

<http://www.clevermodels.squarespace.com/>

<http://backdropjunction.com>

<http://modelart.us>

So...
How do they look
on the layout??



MICHAELSON
MINING

A4

C3

A4

B4b

A13

A1

A2

A4

C3

A5

A4

A5

A6

D1a

U NION P
RR7 10

ACIP





NORTHWEST
TRANSFER CO.

LINDSEY-ROBINSON & CO.

LUNDM

WISCHER'S WASHER CO.





NORTHWEST
TRANSFER CO.

WISCHER'S WASHER CO.

LINDSLEY-ROBINSON & CO.

LUNDMAN SEA



BARTLETT BARREL MFG.





VALLEY
POWER CO.

BARTLETT BARREL MFG.

MATHESON & WESTERN

1034

S.P.&S.

SP&S 12262

SPOKANE
PORTLAND
SEATTLE

LUNDMAN SEAFOOD COMPANY







PYRAMID BREWING CO.

DICKSON

NORTHERN PACIFIC









Proven concept:

Both Dickson & Pyramid were too tall as originally built.
They would have interfered with the view of the town behind!
I cut both Dickson and Pyramid down by two stories.
The mockups saved me from ruining two good kits!



Reduced height improves viewing of future town.



THANK YOU!