



Snow Flies at Custer, December 17

## Mount Vernon NMRA Clinic Report

**December 22, 2015**

Eleven attended the Clinic just a few days before Christmas. Many regulars were not able to make the Clinic considering the season. For those unable to attend, we hope this report will be helpful.

### Announcements

December 21 thru January 1: 20th Annual Model Train Festival [WA State History Museum Model Train Festival](#), Tacoma

January 14, Mt. Vernon Clinic, *NEW DAY AND DATE: SECOND THURSDAY*. Mike O'Brien will share his tree building process



January 16-18, the 4th Division's Annual Model Train Show at the Pacific Science Center. Go to <http://4dpnr.com/event/pacific-science-center-model-train-show/> for more details.

February 11, Mt. Vernon Clinic. Nick Muff, MMR, "Modeling the Kansas City Union Station"

February 27, 28, Monroe Model Railroad Show and Swap Meet. Visit <http://www.unwclub.org/unwshow.html> for details.

March 5, Milwaukee Road Meet. Burien, WA. Visit <http://www.milwelectric.org/2016-march-milwaukee-meet-march-5-burien-wa/> for updates.

March 10, Mt. Vernon Clinic. Ted Becker, "Steam Locomotive Appliances"

March 19, Santa Fe Mini-Meet. Visit <http://www.atsfrr.com/convention/MiniMeets/17th%20Northwest%20Santa%20Fe%20Mini.pdf> for more information.

April 2, Pennsylvania Rail Road Meet, Burien, WA. Double click this PDF



to view the Flyer

April 14, Mt. Vernon Clinic. Dioramas and Mini-Clinics.

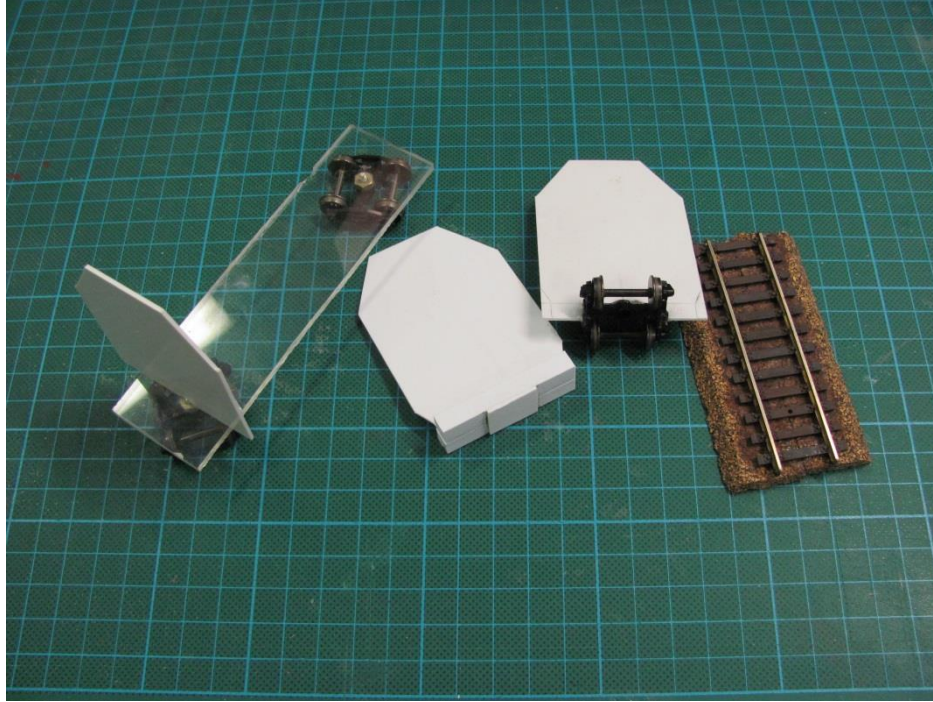
May 12, Mt. Vernon Clinic. Kevin Klettke "Fleet Weathering." This is a reprise of his well-received Clinic at PDX 2015 on efficiently weathering large fleets of rolling stock. Not to be missed. Here's a sample:



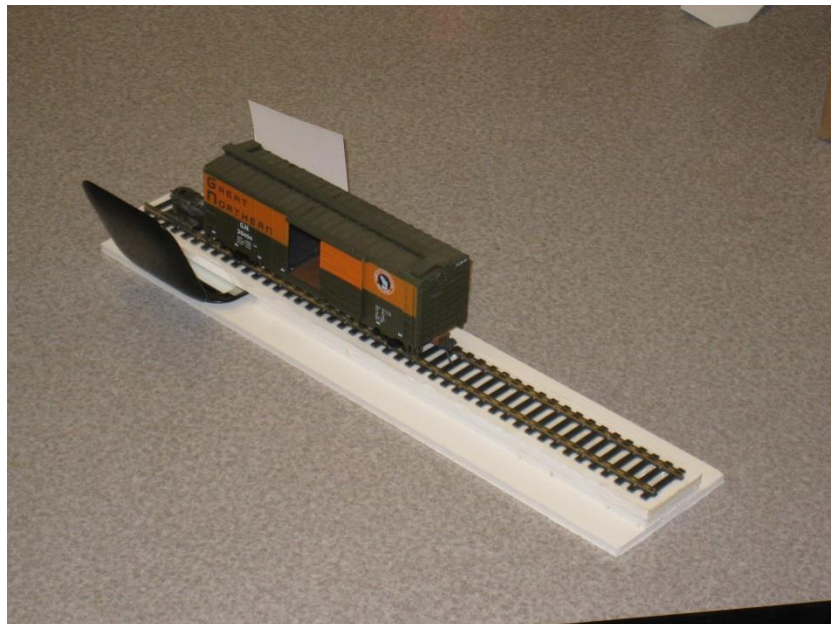
Visit Kevin's website at <http://wnrr.net>.

## Tool Time

Ted Becker shared a number of useful devices he designed to aid in assuring adequate clearance. The basic idea is to trace an NMRA Clearance Gauge on sheet styrene and adapting it for various purposes: one is mounted on a truck for general use as track is laid; another sets on roadbed and rail to test vertical clearance; a pair is used to verify overhang clearance on curves.



Ted also shared an interesting use of a hinged mirror which slips through a slot under the track which allows him to verify all wheels are on the track.

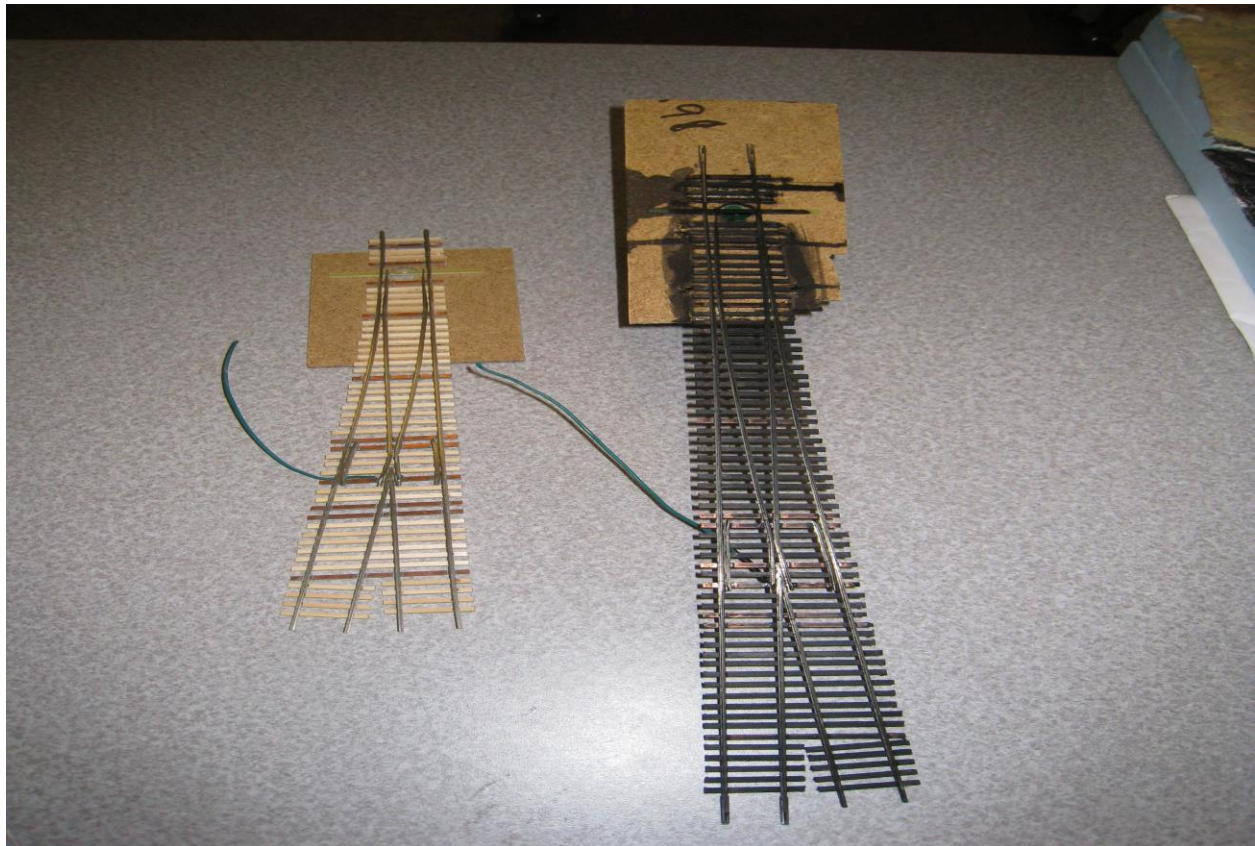




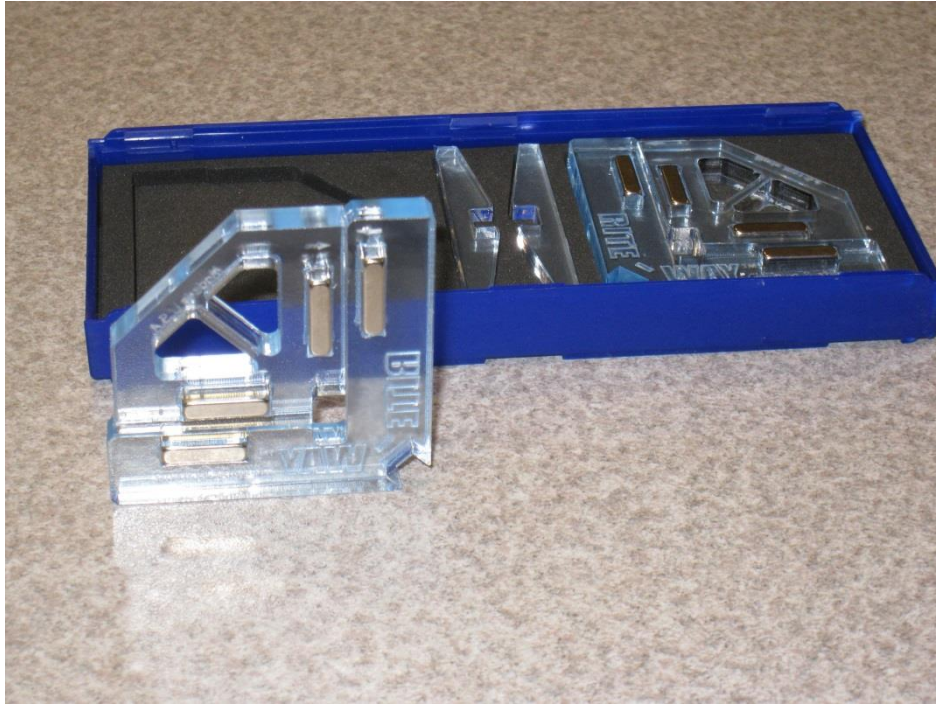
Tom Buckingham showed us a smooth jawed Bent Plier. The benefit of the smooth jaws is that they don't nick the rail.



Tom also shared his process for finishing custom made #8 turnouts. He uses MinWax Ebony and cleans the rail with a Cratex Abrasive Block.



Al Carter showed us magnetic corners which he uses in constructing buildings to assure the walls are square and plumb.



Mike O'Brien and Al Carter introduced a project wherein they will update the Clinic over the next few months with progress on assembling a laser cut model kit.





Before Al shared the key tools in his box for this project, he showed us another more modest laser cut kit that was thought to be so straightforward, there are no instructions.



As a challenge, Al offered a free kit with the proviso the taker would share progress with the Clinic. John Biagio accepted the challenge.



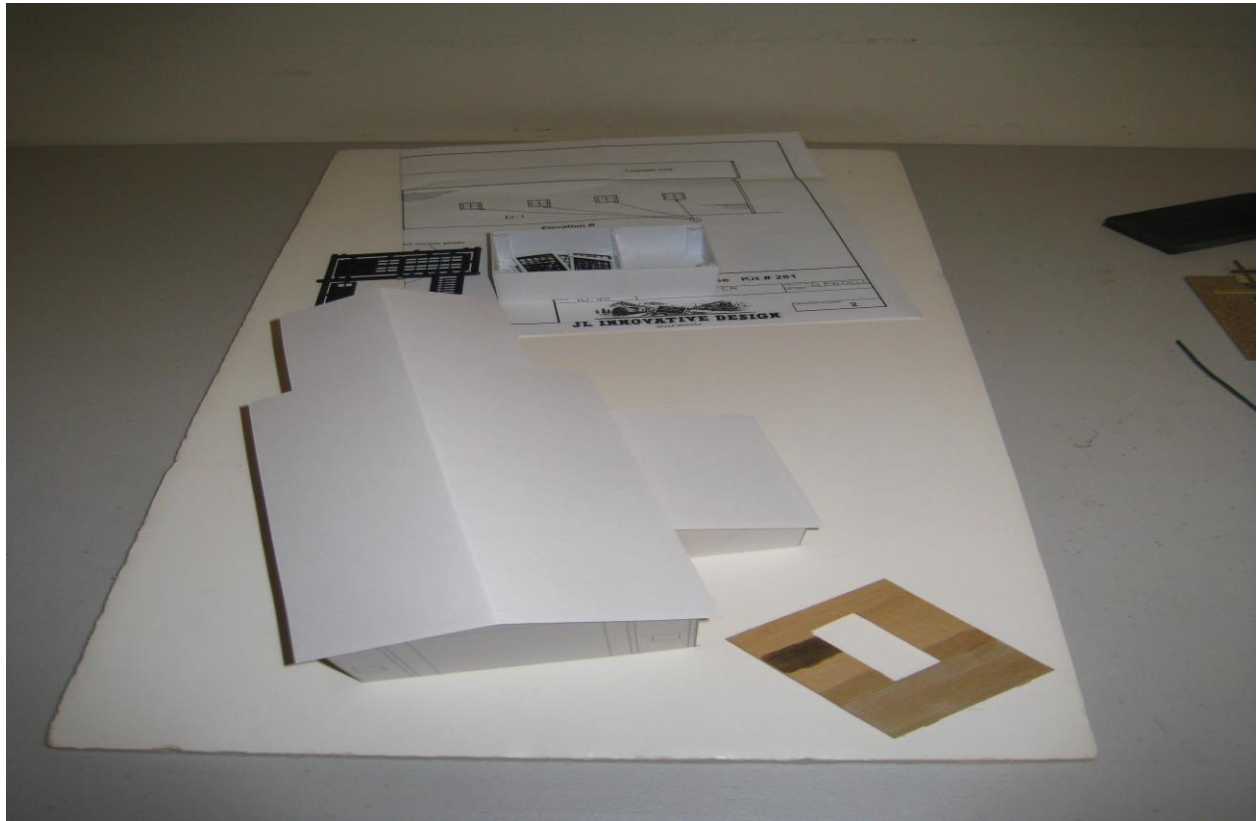
Al's tool box had a wide range of the new, the old and the unusual:

- Sprue Nipper (Microscale, PBL)
- Emory Boards
- Exacto Knife with Excel Blades
- Angle Plates (used as weights to hold down work and to help keep corners square)
- Machinist Squares (Harbor Freight)
- Tweezers
- Pounce Wheel for detailing nails on wood siding (Al's secret is to use Dremel saw blades with the correct number of teeth per inch to realistically model nail heads)
- Glue Bot for applying yellow glue (Amazon or maybe local building center (i.e. Mount Vernon Building Supply)
- Aleene's Glue Fast Grab (great for styrene to wood applications)
- Canopy Glue for attaching glazing to window openings - dries clear
- PrismaColor Premier Double Ended Art Markers in various strengths of Warm and Cool Gray
- Leather Dye (Black, and not liquid shoe polish)



L to R: Glue Bot, Angle Plate, Pounce Wheel, Sprue Nipper

## Diorama Build Progress



## Ted Becker's Engine House



## Al Carter's Water Front with Motel and Oyster House





**Tom Buckingham's Streambed**



**Mike O'Brien's scene with Fall Foliage**

