

The 4th Division of the Pacific Northwest Region of the  
National Model Railroad Association Presents

# The Skagit Valley & Whidbey NMRA Clinic

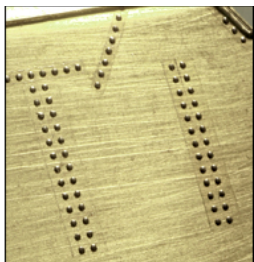
## Wednesday, October 10, 2012

Location: Summer Hill meeting room in Oak Harbor.

Time: 7:00 PM (earlier to visit the Swap Meet tables)

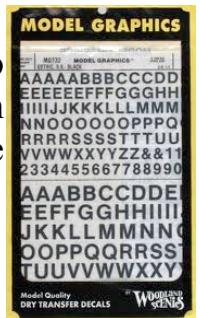
### Mini-clinics 2.0

October is the time for tricks and treats, and our October clinic promises both! We will have the pre-meeting swap table available for all to look over. For those of you who missed the initial mini-clinics presentations, these are short (5-15 minutes) clinics on topics that the presenters (also known as Gang-Pressed volunteers) who have found a new product or method for doing something or simply have something to share with the group that wouldn't fill a regular clinic time. For our October meeting we will start with:



\*Using/applying Micro Mark's  
Rivet Decals by Steve Jaffrey

\*Tips on using Dry Print Lettering to  
avoid unnecessary aggravation by John  
White



\*Tuning Trucks by Phil Gonzales



\*Switch Stands by Rich Blake



\* Making Stand-Up Cows with Bruce's Acrylic Filler by Susan Gonzales

\* What is Silkspan and what is it used for? By Steve Jaffray



\* The National Narrow Gauge Convention Review and lessons learned by Al  
Carter

If anyone else has something for show and tell, this is the time! Our new projector set up makes viewing from the back of the room much easier. Should we run late or have more questions than time, we can always expand on any of these topics at a later date.

	The Skagit Valley & Whidbey NMRA Clinic					
	Model Railroad Calendar for October 2012					
Sun	Mon	Tue	Wed	Thu	Fri	Sat
	1	2	3	4	5	6
						28th Lynden Model Train Show & No. Olympic Train Show & Swap Meet (See info below)
7	8	9	10	11	12	13
			Clinic at Summer Hill @ 7:00 Mini-Clinics			PNW Prototype Modelers meet in Seattle (see info below) & Milwaukee Modelers Meet in North Bend (see below)
14	15	16	17	18	19	20
						15th Maple Valley Model Train Show Ravensdale (info below)
21	22	23	24	25	26	27
28	29	30	31			

### ***Further information about October events:***

Oct 6-7, Lynden, WA **Lynden Lions Club 28th Annual International Model Train Show**. Info:- [www.lyndentrainshow.com](http://www.lyndentrainshow.com)

Oct 6-7, Sequim, WA **North Olympic Peninsula Railroaders Train Show and Swap Meet**, Sequim Prairie Grange, 290 Macleay Rd, Sequim, WA.. 10 am to 4 pm Saturday and 10 am to 3 pm Sunday. Info:- Lauren Scrafford, (360) 379-3280. [e78milrd@q.com](mailto:e78milrd@q.com)

Oct 13 (Sat), Seattle, WA **Rails By The Bay 2012**, Pacific Northwest Railroad Prototype Modelers meet. Northcut Landing, Seattle's University District, 5001 25th Ave. NE Seattle, WA 98105, 9AM to 5PM. Admission: \$15, discount price of \$12 if you bring at least one model or module for display (finished or not!) Info:- [www.northwestrpm.com/RPM\\_Meet.html](http://www.northwestrpm.com/RPM_Meet.html).

Oct 13 (Sat), North Bend, WA **Milwaukee Modeler's Meet**. 10:00 - 5:00 Models as well as presentations on model, prototype and historic Milwaukee Road operations. Location: Cedar River Watershed Education Center . Info:- [www.milwelectric.org](http://www.milwelectric.org)

Oct 20-21, Ravensdale, WA **15th Annual Maple Valley Operating Model Train Show**, 10am-5pm. Gracie Hansen Community Center, 27132 Ravensdale Way. Suggested Donation: Adults \$5, Children (3-11) \$2. Info:- Steve Hiester, (425) 432-8391 [hies\\_skel@hotmail.com](mailto:hies_skel@hotmail.com), [www.gretermaplevalleyareacouncil.org/events.html](http://www.gretermaplevalleyareacouncil.org/events.html).

Don't see much in November, so get out and enjoy these - the next big event is the Monroe show the first weekend of February.



## Last Month's Clinic:

Eric Erickson presented a well received clinic titled "Big Trees: Loggers and Mills" on the early logging activities in the forests of Western Washington. He has spent years doing research about Logging and Sawmilling in Washington State leading to a number of books about the subject as well as transportation



histories. His latest book, *Mile Post: A History of the Arlington-Darrington Branch of The Northern Pacific Railway : 1899 to 2009*, was available for sale (\$40.00 each) at the clinic. Thank you, Eric.

Pictures of Eric's Garden Layout in Anacortes:



## SWAP MEET RETURNS

For the October Clinic, we will have our first of the season SWAP MEET! Bring 'stuff' you wish to sell or give away to the little room off the regular meeting room by about 6:45 or so. Please have your name and prices clearly marked.



# The Miscellaneous Information Page

## Read the *Grab Iron*, our Division's online Newsletter

Fourth Division, Pacific Northwest Region, NMRA website: <http://www.4dpr.org/index.htm>

Anyone can access this page and all sub-topics (except Members Only, which is primarily just BOD meeting minutes, etc). Of particular interest is the Timetable: <http://www.4dpr.org/Timetable.htm> and the Grab Iron: <http://www.4dpr.org/Grab-Iron.htm>. You can subscribe to the Grab Iron by sending in an e-mail and you will receive a reply allowing you to choose which categories to scribe to: [http://4dpr.org/grabiron/?page\\_id=118](http://4dpr.org/grabiron/?page_id=118) - easiest just to subscribe to all.

Remember, this is **free**, no background checks, no bank data, no social security numbers or credit cards - just your e-mail address and subscribe and you will receive up to the minute breaking news!

Any questions, e-mail Al Carter at: [tabooma@msn.com](mailto:tabooma@msn.com), or call 360-399-1226.

---

## John White earns the 4th Division's *Superintendent's Award!!*

The 4th Division's superintendent, Ken Liesse (on the left), came to Oak Harbor to award this year's Superintendent's Award to our very own John White in recognition of John's many years of leading the **Skagit Valley & Whidbey NMRA Group**. With three others back prior to the turn of the century (this one, not the last one, John is not that old), the group was brought back from the dead and, as of his last clinic in April, we were up to over 30 for many meetings! Thank you John for all your years of effort to promote the model railroad hobby from the south end of Whidbey to the foothills of Skagit County. The award is well deserved!



---

## Tool Of The Month - Al Carter

One of the items that is on the agenda at some of the other monthly clinics is a "Tool Of The Month" or sometimes "Cheap Tool" spot, and I'd like to implement that segment at the Skagit/Whidbey Clinic. I will bring along something to show and describe, but here's where you come in: If you have a tool that you'd like to share with the clinic members, please bring it along, and you can have top billing, and I'll hold mine until I'm needed to fill in. Please limit your presentation to no more than 1 minute, and also, please provide us with a source for your tool. If you have any questions about how to do this, you can call me at 360-399-1226, or e-mail at: [tabooma@msn.com](mailto:tabooma@msn.com).

And On a Different Note, from Al Carter

At the September clinic, I mentioned that the big band that I play in (The Seanotes) is looking for additional musicians - sax, trumpet, piano, drums, bass. If you happen to play, or know of a neighbor or friend that plays, please let me know - 360-399-1226 or [tabooma@msn.com](mailto:tabooma@msn.com). BTW, in case you were wondering, this is railroad related - our band plays Chattanooga Choo Choo and Tuxedo Junction...

---

## Pre - Clinic Dinner Get-Together: Pizza +!

We will again be getting together at the  
San Remo Mediterranean Grill in Oak Harbor [421 NE Midway Blvd] at about 5:15.  
They have pizza, pastas, Greek specialties, seafood and salads!

---

If you have any information, good websites, things for sale of a model railroad nature or whatever, send me a note and I will add it to this page in the future editions as space permits.

## More Miscellaneous Information

### The Replicator 2:

This just may be the future of model railroad structures and getting that odd freight car you have always wanted. Remember when home computers were just a rich person's toy and obviously just a fad? The dot matrix printer was supreme

and that weird ink jet printer waaay to expensive to ever be popular?

Color documents were just too costly? Well, now there is a \$2199 3D printer available ready to print.

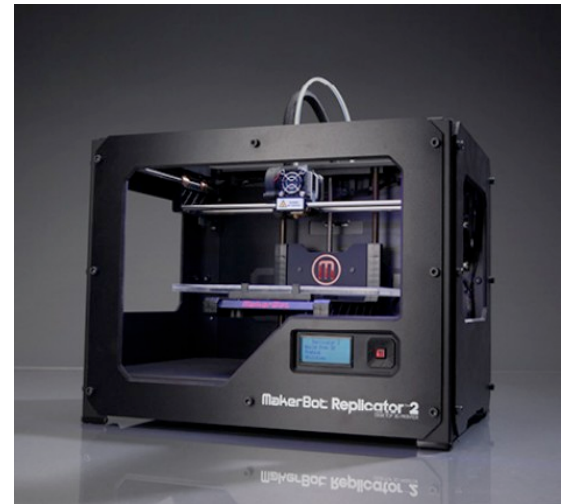
See [www.wired.com/design/2012/09/how-makerbots-replicator2-will-launch-era-of-desktop-manufacturing/all/](http://www.wired.com/design/2012/09/how-makerbots-replicator2-will-launch-era-of-desktop-manufacturing/all/) for an article from WIRED magazine. I know, that is a lot of money, but so were the first desktop computers.

With Epson and HP getting into the market, they will get down to the \$200 to \$500 level in a few years and then all you have to do is pay \$1.99 for the computer file for that obscure boxcar you wanted.

Or just \$3.99 for the file to print the Tennessee Pass passenger station - just print, paint and plant!



N-Scale D&RGW "Fowler Clone" Boxcar  
Available from online 3D printer Shapeways.com



**The “Magic of Scale Model Railroading”** exhibit at the California State Railroad Museum (CSRM) is in the midst of fundraising. An anonymous donor has pledged \$250,000 in matching funds and, as of late July, donations of at least \$160,000 were still needed to achieve the match. The funds must be received by the end of 2012. The exhibit is expected to cost between \$500,000 and \$750,000. The “Magic of Scale Model Railroading” exhibit will be seen annually by 600,000 visitors to CSRM. If you would like to contribute, email [nmrahq@aol.com](mailto:nmrahq@aol.com) or phone 424-892-2846 or send a letter with your pledge to NMRA Headquarters

4121 Cromwell Rd.

Chattanooga TN 37421

Please make sure to specify your pledge is for the exhibit.

Here is a further info link from the museum itself:

<http://m.csrmf.org/events-exhibits/whats-new/railroad-museum-announces-exhibit-partnership-with-national-model-railroad-association>

### Thought the Steam Locomotive was dead??

Plans to create the world's first carbon-neutral higher-speed locomotive were announced by the Coalition for Sustainable Rail (CSR), a collaboration of the University of Minnesota's Institute on the Environment (IonE) and the nonprofit Sustainable Rail International (SRI).

CSR Project 130 has a simple goal: create the world's cleanest, most powerful passenger locomotive, proving the viability of solid biofuel and modern steam locomotive technology. The Coalition will put its technology to the test by planning to break the world record for steam locomotive speed, reaching 130 miles per hour and demonstrating the viability of this revolutionary, clean transportation technology.

The locomotive will run on torrefied biomass (biocoal), a biofuel created through an energy-efficient processing of cellulosic biomass. Biocoal exhibits the same energy density and material handling properties as coal, but unlike coal, it is carbon neutral, contains no heavy metals, and produces less ash, smoke and volatile off-gases.

More information at: [http://www1.umn.edu/news/news-releases/2012/UR\\_CONTENT\\_389949.html](http://www1.umn.edu/news/news-releases/2012/UR_CONTENT_389949.html)





## Local Layout Progress



Dick Haines has been working on the *Big Stump, Little Lump, Lumber & Ore Railway* up in Oak Harbor and has sent these pictures to share. Thank you Dick- wonderful work, looking forward to our clinic in June to visit the BSLLL&O!!

< Sunset over Puget Sound

Blanchard's Wharf >



Elma Crossing >



< Gate, Washington at dusk



< Where Mountains and wall background meet

# Skagit Valley & Whidbey NMRA Clinic Schedule

## 2012/2013

Notes: All regular meetings are held at the Summer Hill Community in Oak Harbor from September through June on the dates shown starting at 7:00pm or as otherwise announced.

NMRA Membership is encouraged

See [www.nmra.org](http://www.nmra.org)

DATE	SUBJECT
Aug 8 <sup>th</sup>	Annual Potluck BBQ at John Marshall's
Sept 19th	Logging and Live Steam by Eric Erickson
<b>Oct 10th</b>	<b>Mini Clinics</b>
Nov 14th	The Tabooma County Railway: Choosing a Private Roadname - Developing a Plausible History by Al Carter
Dec 5th	Wassail at John White's - (note: first Wednesday)
Jan 9th	Locomotive Tune-ups (both steam and diesel) by John Mann and Tom Hawkins
Feb 13th	Streets & Highways, Including Street Trackage by Al Carter
Mar 13th	Track Construction Methods in the Real World by John White
Apr 10th	DCC Sound Systems Hands-On Test Track by Bill Harper/John Mann
May 8th	Backdrop Clinic by Al Carter and Jack Tingstad
Jun 12th	Open House at Dick Haines

### Volunteers or Press Ganged

NMRA Liaison and Reportage	Gordon Garnhart
Keeper of the Purse [aka the Bucket]	Iver Johnson
Layout Design Aficionado	Tom Hawkins
The DCC & Audio Visual Main Mann	John Mann
Newsletters and Announcement Flyers	Al Frasch
Refreshments	Phil Gonzales
Keeper of the Rolls[aka the Membership Roster]	Al Carter
Clean-up Artists	- open -
The Tin Can Gaffers	Curt and Iver Johnson
Competition Shepherd	- open -
Program Organizer	Susan Gonzales
Clinic Chair	Rich Blake